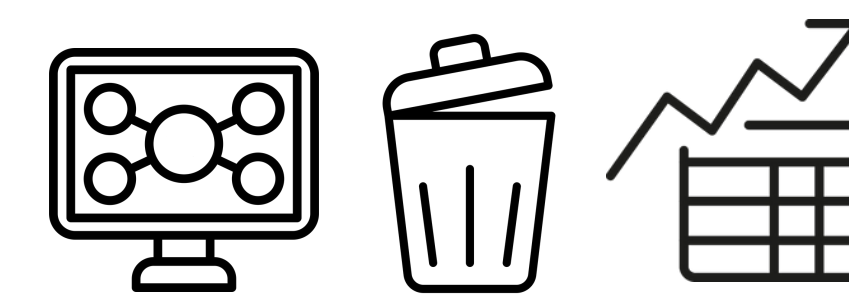


# LOCAL INNOVATION PARTNERSHIP TARTU, ESTONIA



## KEY ACTIONS & TAILORED SOLUTIONS

### Governance

- Motivated decision-makers through key numerical indicators and evidence-based dialogue
- Workshops for impact: Targeted sessions promoted data-driven decisions to increase local and organic food in schools and reduce food waste
- Strengthened collaboration: Annual conferences aligned municipalities, schools, and farmers around the Tartu County Food Strategy
- Concrete commitments: A 2025 Goodwill Agreement set a joint Action Plan on food education, sustainable catering, and waste reduction

### Demand-side

- Organised workshops on sustainable food practices for school leaders, caterers, and procurement specialists, promoting local and organic sourcing and food waste reduction
- Hosted South Estonian Food Conferences (From Farm to School, Nutrition-Aware School), engaging over 160 stakeholders to strengthen food education, healthy school meals, and rural food systems
- Implemented the “Making the School Community Food-wise” programme in five schools, integrating food education into curricula, improving lunch organisation, measuring plate waste, and supporting schools through mentoring

### Supply-side

- Developed an updated overview of the Tartu County food sector with clear graphs and key indicators
- Supply-demand mapping: A joint survey with the Estonian Academy of Life Sciences mapped local producers, production volumes, and demand from educational institutions
- Foundation for coordination: The results support a future platform linking producers and public authorities, a key priority of the Tartu County Food Strategy

## MAIN RESULTS

- Formalised political commitment through a Goodwill Agreement and a joint Action Plan (2025–2028) on sustainable school food systems
- Improved food awareness and reduced food waste in schools through structured education and monitoring
- Stronger links between schools and local food producers, supported by data-driven decision-making
- Replicable school food model developed and already expanded to additional municipalities (e.g. Peipsiääre Municipality)



**DID YOU KNOW THAT TARTU COUNTY HAS TURNED KEY NUMBERS INTO A DRIVING FORCE FOR DECISION-MAKING IN SUSTAINABLE SCHOOL FOOD AND REGIONAL FOOD POLICY?**





# LOCAL INNOVATION PARTNERSHIP SATAKUNTA, FINLAND



## KEY ACTIONS & TAILORED SOLUTIONS

### Governance

- Optimised communication strategies within the Satakunta food cluster through coordinated messaging and four video interviews featuring key regional actors (Regional Council, Business Finland, ELY Centre), laying the foundation for continuous joint communication and increased cluster visibility

### Demand-side

- Implemented a food waste reduction pilot in Eura's schools and daycare centres, achieving over 50% waste reduction within one year; expansion planned to additional municipalities (2026–2027) with digital measurement tools and student engagement methods adopted from other Food Clusters
- Developed methods for carbon footprint calculation, environmental labelling, and traceability to improve transparency in public procurement and consumer markets, particularly benefiting small-scale producers.
- Impacts include reduced food waste in public institutions, improved transparency for municipalities and consumers, and strengthened competitiveness of local producers in procurement processes

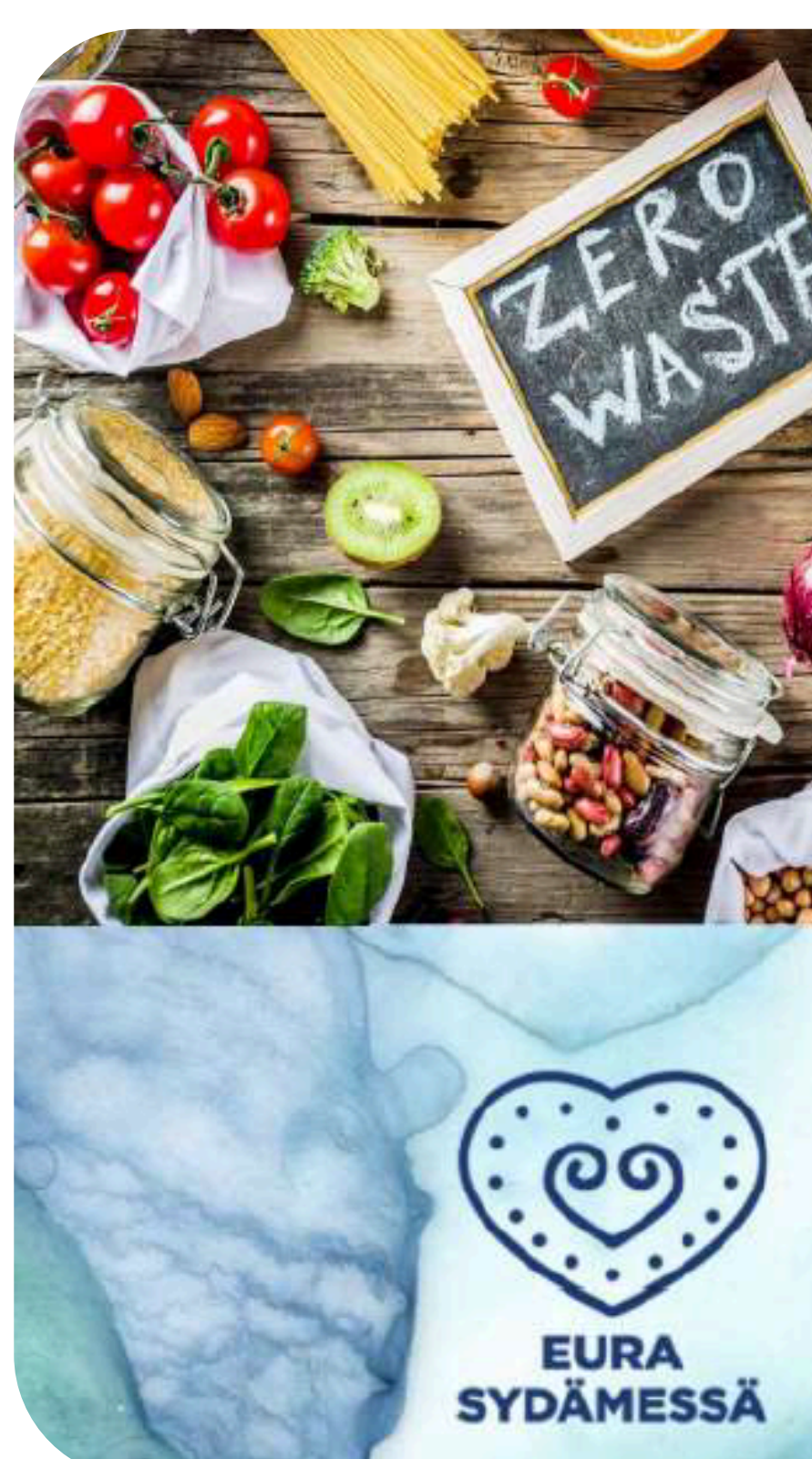
### Supply-side

- Assessed environmental impact practices of local producers, highlighting the growing importance of facility-specific carbon footprint data in public procurement and the structural disadvantages faced by small producers
- Progress on environmental labels slowed due to EU-level regulatory uncertainty (CSRD amendments, forthcoming Green Claims regulation), causing change fatigue and limiting stakeholder engagement, though companies continued sustainability actions independently
- Explored development of a platform and cooperation model for local producers (DPS operational model), including producer cooperation and digital wholesale solutions; while uptake remained limited, experiences will inform future procurement processes once current contracts expire
- Continued commitment from municipalities to local sourcing, with upcoming market dialogue events planned to support improved procurement practices in compliance with competition law



## MAIN RESULTS

- Strengthened regional collaboration through joint communication, enabling faster coordination, clearer access points for companies, and aligned messaging on national food export initiatives and the Satakunta Food Strategy
- Successful food waste pilot in Eura, leading to an official municipal decision to integrate food waste education into the formal early childhood education curriculum
- Transfer of KISMET project results into the FC Eura food waste and communication pilots

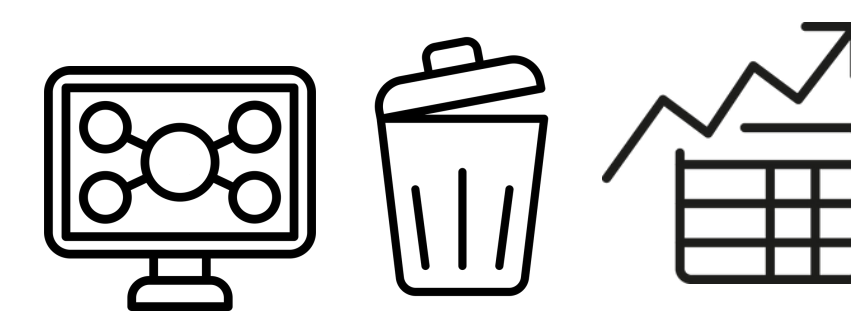


**DID YOU KNOW THAT SATAKUNTA'S FOOD WASTE REDUCTION PILOT CUT SCHOOL AND DAYCARE PLATE WASTE BY MORE THAN 50% IN JUST ONE YEAR?**





# LOCAL INNOVATION PARTNERSHIP SOUTH SAVO, FINLAND



## KEY ACTIONS & TAILORED SOLUTIONS

### Governance

- Applied a co-creation model to develop the Savonlinna Sustainable Food Vision and action plan, drawing on local expertise and stakeholder input
- Motivated decision-makers through key numerical indicators, supported by the Food Industry Databank
- Designed a user-friendly, stakeholder-driven data platform compiling statistics across the full food chain, with replication potential

### Demand-side

- Co-created the Savonlinna Sustainable Food Vision: Recommendations for Developing the Food Sector 2025–2030 through workshops and iterative expert evaluations
- Built and piloted the Food Industry Databank (Power BI, automated statistics) to support regional and national stakeholders with actionable insights
- Implemented the Seasonal Pyramid pilot, using age-specific educational games (kindergarten to secondary school) to promote seasonal and local food consumption

### Supply-side

- Advanced plans for a local food platform and wholesale system in Savonlinna, aligned with the needs of producers, food services, and restaurants, and informed by benchmarking across Finland and KISMET partner regions



## MAIN RESULTS

- Food Industry Databank developed and nationally recognised, demonstrating the value of data-driven tools for sustainable food system planning
- Stronger regional coordination and strategic capacity through co-creation of a shared food vision and action plan
- Replicable data and governance model with potential to scale across Finland
- Increased awareness and adoption of seasonal food practices across different age groups



### All Year Round

#### Rarely

Food imported from outside Europe



Vegetables and fruits consumed during the season often contain more nutrients and have a fuller taste.

According to the harvest season, locally produced food is part of promoting sustainable development and a more environmentally friendly food system.

#### Sometimes

European fruits, leaf vegetables and root vegetables: fruits, leaf vegetables, asparagus, sweet potato  
Meat: game  
Canned / Dry food



#### Often

Root vegetables: potato, carrot, swede, beetroots, parsnip, celery, turnip, radish, beets  
Green plants: cabbages, salads, rucola, spinach, Chinese cabbage  
Berries: strawberry, blueberry, raspberry, lingonberry, currants, cranberry  
Dairy products: yogurt, curd, cheese  
Cereals: barley, oats, rye, wheat  
Aquaculture: like: rainbow trout, brown trout

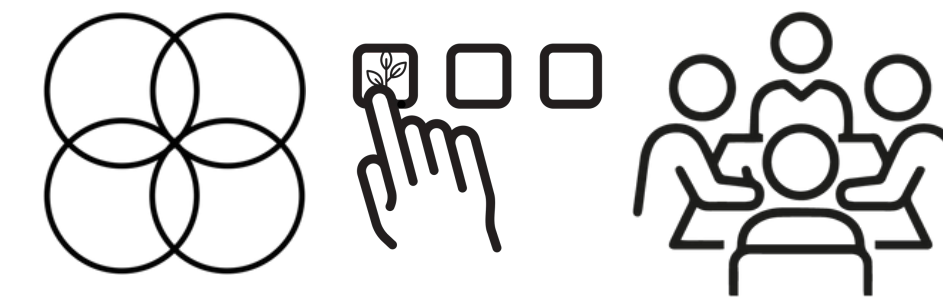


**DID YOU KNOW THAT SOUTH SAVO CREATED INTERACTIVE ACTIVITIES FOR CHILDREN, YOUTH, AND ELDERLY TO ENGAGE ALL AGES IN SUSTAINABLE FOOD HABITS?**





# LOCAL INNOVATION PARTNERSHIP HAMBURG, GERMANY



## KEY ACTIONS & TAILORED SOLUTIONS

### Governance

- Developed a Development Plan for Quadruple Helix Network Activities focused on the Food Cluster
- Conducted a multi-stakeholder process for the Future Food Campus Hamburg, including feasibility studies, quarterly workshops with innovative food actors, and contributions to a 90-page technical economic assessment
- Engaged stakeholders to define ecosystem needs through a positioning paper

### Demand-side

- The Food Innovation Camp connected decision-makers from retail, gastronomy, investment, and politics with up to 85 startups through expos, workshops, matchmaking, and live cooking
- Interactive formats such as What the Health - New Food is it Healthy? with Aufbruch Hamburg and youth initiative (DOWN4) introducing citizens to novel foods (cultivated meat and fish, algae, alternative proteins) supported by Future Food Campus Metaverse experience
- Developed presentations, social media videos, and the Foodworks Media Channel “Your Favorite Foods” to communicate food innovation and sustainability
- Piloted the Resilient Nutrition Dinner to foster dialogue across business, politics, science, and civil society, and collaborated with universities to engage younger audiences

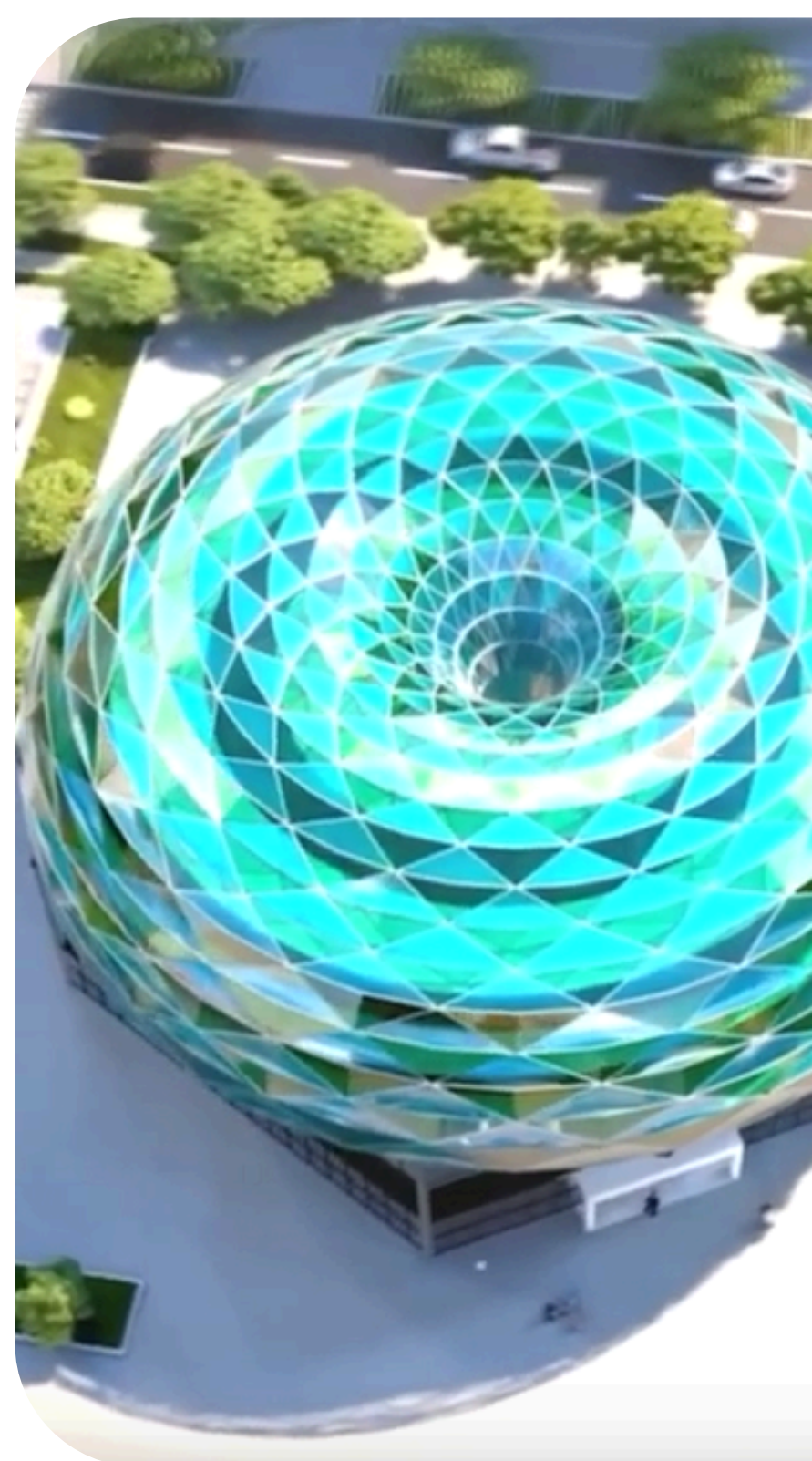
### Supply-side

- Positioned Hamburg internationally as a sustainable food innovation hub
- Initiated international cooperation (e.g. Singapore partnership)
- Strengthened networks with innovative food producers and circular economy actors



## MAIN RESULTS

- Establishment of a Food Cluster as a collaboration hub between businesses, academia & administration/governance
- Strengthened Quadruple Helix cooperation across public sector, industry, research and civil society
- Increased public awareness and acceptance of new food technologies and regenerative practices

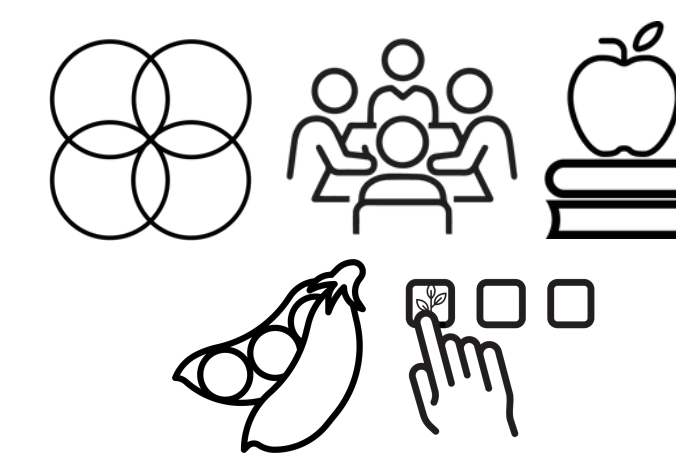


**DID YOU KNOW THAT HAMBURG'S FOOD CLUSTER SUPPORTS CIRCULAR FOOD SYSTEMS AND REGENERATIVE FARMING, INSPIRING LOCAL COMMUNITIES TO RETHINK FOOD PRODUCTION?**





# LOCAL INNOVATION PARTNERSHIP VEJLE, DENMARK



## KEY ACTIONS & TAILORED SOLUTIONS

### Governance

- Co-created a food strategy model positioning Food as a Driver for climate action, health, and local economic development
- Vejle Municipality's Culinary Institute initiated a quadruple helix partnership to optimise local food value chains and explore AI and other technologies to reduce food waste

### Demand-side

- Developed a pentahelix partnership combining government, businesses, academia, civil society, and enthusiasts to foster innovation and sustainable, plant-rich, local solutions
- Implemented initiatives including Food as a Driver, GastroDays, Day of Legumes, Young Food Talents, and Pulse Challenge to inspire sustainable menus and engage stakeholders across the food value chain

### Supply-side

- Matchmaking for plant-rich food producers supported early-stage innovation and scaled production of plant-based and hybrid products for meaningful change at the national level
- Food Organisation of Denmark is using Matchmaking between producing companies and retailers to enhance the sales and visibility of plant based and hybrid products
- Initiatives like Day of Legumes enhanced value chain collaboration for Danish-grown legumes, connecting producers, retailers, and other key stakeholders

## MAIN RESULTS

- Local businesses actively engaged in matchmaking, creating a network with potential national reach
- Pentahelix partnership model developed, with a comprehensive roadmap for establishing and operationalising multi-stakeholder collaboration
- Promoted plant-based diets and reduced food waste
- Engaged the next generation in sustainable cooking and plant-based culinary skills
- Built skills and inspired sustainable menu practices in municipal institutions and private kitchens, engaging over 40% of kindergartens

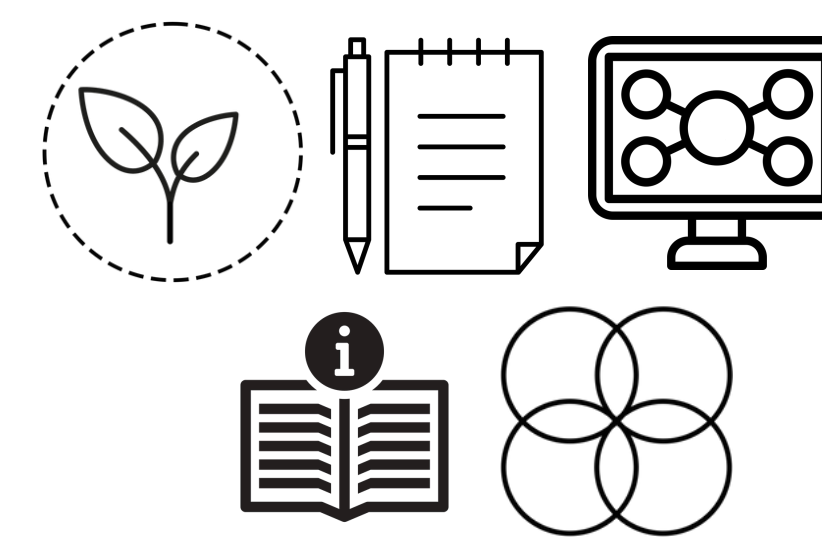


**DID YOU KNOW THAT OVER 40% OF MUNICIPAL KINDERGARTENS IN VEJLE NOW SERVE MORE PLANT-RICH, SEASONAL, AND LOCAL MENUS THANKS TO SKILL-BUILDING PROGRAMS?**





# LOCAL INNOVATION PARTNERSHIP SÖDERTÄLJE, SWEDEN



## KEY ACTIONS & TAILORED SOLUTIONS

### Governance

- Implemented the Organic District (Bio-district) approach in Sörmland, embedding sustainability across agriculture, economy, and society through participatory governance
- Established a dedicated Bio-district organisation, governance structure, and strategy; awarded EU Best Organic Biodistrict 2024
- Advanced innovative governance tools such as True Cost Accounting workshops
- Created a How-to Guide for public food supply strategies as a tool for municipalities and regions to build resilience and better integrate and align their food related policies and undertakings

### Demand-side

- Applied sustainability analysis and labelling (Consupedia) to assess municipal food purchases against 21 criteria, comparing conventional menus with the Diet for a Green Planet concept
- Strengthened local procurement strategies through producer mapping, direct sourcing, and supplier engagement
- Launched innovative procurement and engagement initiatives (e.g. Local Food for Local Markets, Game Local)
- Established a farming and food arena supporting social inclusion and local food production
- Promoted Biodistrict-based governance tools (e.g. biodistrict flower) and initiated True Cost Accounting dialogues

### Supply-side

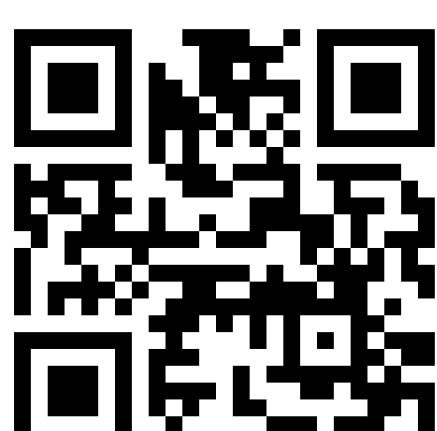
- Used Consupedia and True Cost Accounting to support sustainable procurement and communication on food provenance and impacts
- Facilitated development of platforms for local and plant-rich producers, connecting them to local markets and public buyers
- Built long-term capacity based on Södertälje's established food policy legacy (Diet for a Green Planet), reinforcing organic and plant-rich food systems

## MAIN RESULTS

- High-level EU recognition, including interest from the European Commission and invitations to strategic debates on the socio-economic value of organic food
- Scalable governance and cooperation models, including a new exchange and trade model between European bio-districts
- Strengthened local platforms for sustainable and organic food systems, with transfer potential to other regions



**DID YOU KNOW THAT BIO-DISTRICT SÖRMLAND WON THE EU BEST ORGANIC BIO-DISTRICT AWARD 2024 FOR ITS INCLUSIVE SUSTAINABILITY STRATEGY?**





# LOCAL INNOVATION PARTNERSHIP VIDZEME, LATVIA



## KEY ACTIONS & TAILORED SOLUTIONS

### Governance

- Developed the strategic guidelines “Sustainable Food System of the Vidzeme Region 2025–2035” through a participatory process involving ~170 stakeholders across four workshops
- Produced a comprehensive, data-informed framework supporting policymakers, producers, processors, and traders in advancing a resilient, competitive, and people-friendly regional food system

### Demand-side

- Implemented food education and capacity-building for public catering through masterclasses for school chefs and menu planners
- Focused on healthy nutrition, green procurement, menu planning, and creative use of seasonal, local, and plant-rich ingredients

### Supply-side

- Advanced a Quadruple Helix network during strategy co-creation, identifying future cooperation needs
- Supported foundation activities for the Biodistrict of Gauja National Park
- Organised regional networking events connecting producers, municipalities, and educational/research institutions to explore concrete cooperation opportunities within a sustainable local food system

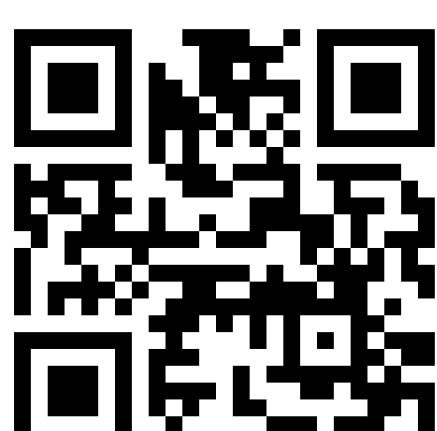


## MAIN RESULTS

- Co-created regional food strategy adopted as a long-term roadmap for a sustainable food system until 2035
- Strengthened decision-making capacity of local authorities through data-based strategic guidelines
- Improved skills and collaboration in public catering, supporting healthier and more sustainable food practices
- Activated Quadruple Helix cooperation, including progress toward the Biodistrict of Gauja National Park



**DID YOU KNOW THAT VIDZEME TRAINED SCHOOL CHEFS TO MAKE DESSERTS OUT OF ROOT VEGETABLES AND FISH RECIPES, COMBINING CREATIVITY WITH SUSTAINABLE COOKING?**





# LOCAL INNOVATION PARTNERSHIP VILKAVIŠKIS, LITHUANIA



## KEY ACTIONS & TAILORED SOLUTIONS

### Governance

- Mapped the local food sector and presented key data through infographics and reports to motivate decision-makers
- Developed a local communication plan to promote sustainable food systems and strengthen cooperation between farmers, public caterers, and municipal representatives
- Conducted a stakeholder workshop with 33 participants, resulting in concrete strategies to improve local food supply

### Demand-side

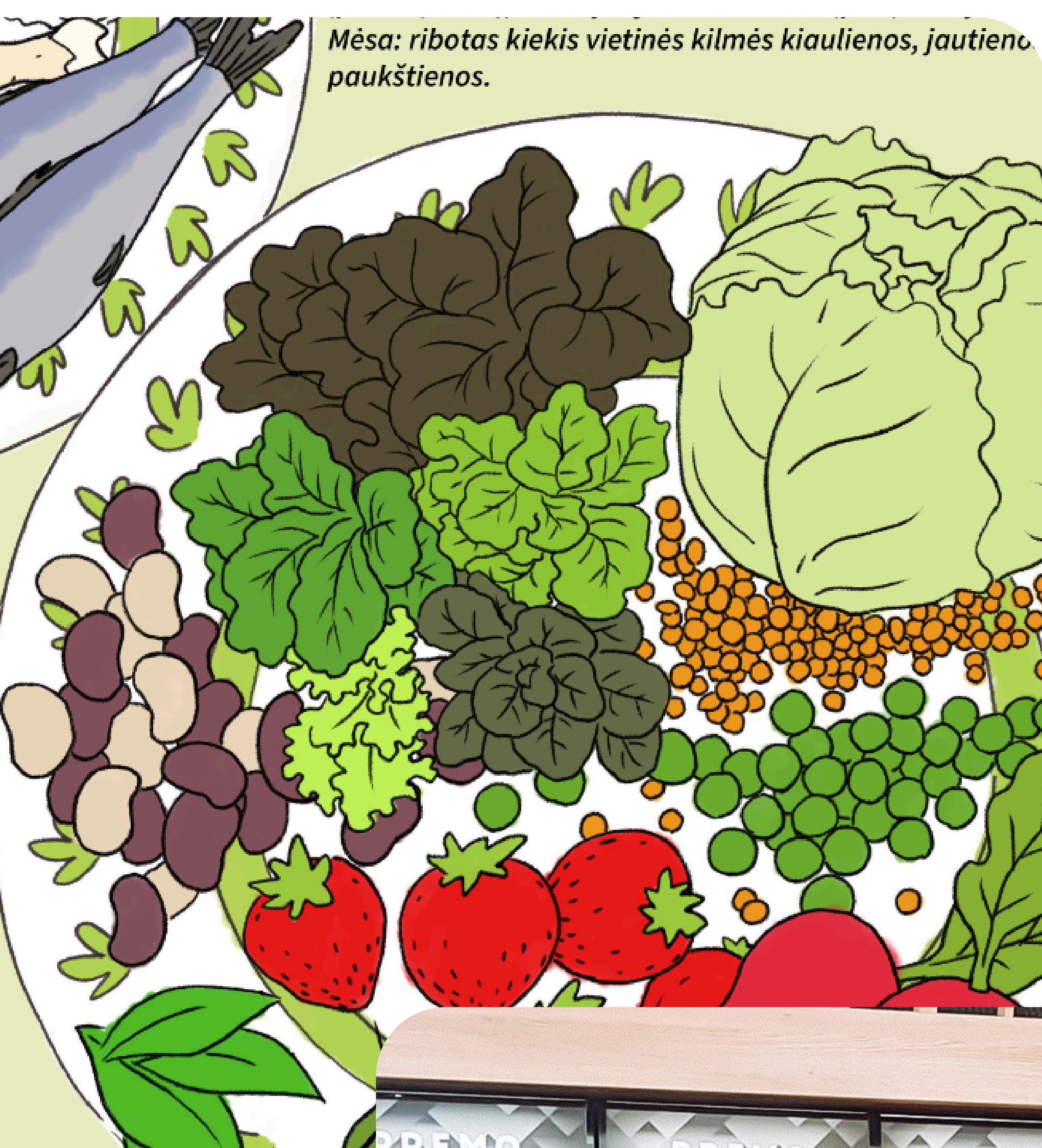
- Implemented the local communication plan as a practical roadmap for sustainable food governance
- Introduced a seasonal food pyramid for public canteens, supporting menu planning based on local and seasonal products
- Impacts include stronger integration of sustainability into public catering and procurement, increased use of local products in institutions, improved nutrition culture in schools, and greater awareness among municipal staff and canteen operators
- Responding to stakeholder input, the Public Procurement Office introduced simplified procedures for short food supply chains, improving access for local farmers

### Supply-side

- Strengthened producer visibility through branding, agrotourism, educational visits, fairs, tastings, and market participation under “Made in Vilkaviškis”
- Challenges remain around limited production volumes, storage infrastructure, seasonal tendering, and higher prices of organic products
- Lessons learned highlight the need for strong local leadership, shared logistics solutions, use of available funding, and inter-municipal cooperation to build sustainable short supply chains

## MAIN RESULTS

- Strengthened municipal capacity to collaborate with small-scale farmers and implement sustainable food initiatives
- Addressed knowledge gaps among small farmers on national support tools, organic farming, and short food supply chains
- Shift toward organic farming and clearer definition of short food chains in local practice
- Deeper stakeholder dialogue on healthy nutrition, food waste reduction, and the strategic value of local sourcing
- Creation and active use of the local brand “Made in Vilkaviškis”, increasing visibility of local products in stores, fairs, markets, online shops, tastings, and educational events



**DID YOU KNOW THAT VILKAVIŠKIS CREATED A LOCAL FOOD BRAND, ‘MADE IN VILKAVIŠKIS,’ NOW SEEN IN MARKETS, ONLINE SHOPS, AND FAIRS ACROSS THE REGION?**

