



3D pens in action to design a Superhero sensory garden – your safe place



Our aim

Develop a set of **digital and traditional solutions** to enable the creation of **mobile and modular arrangements** in which volunteers, teachers, and carers will be able to conduct integration, relaxation, and therapeutic activities more easily and comfortably.



Source: Storyset

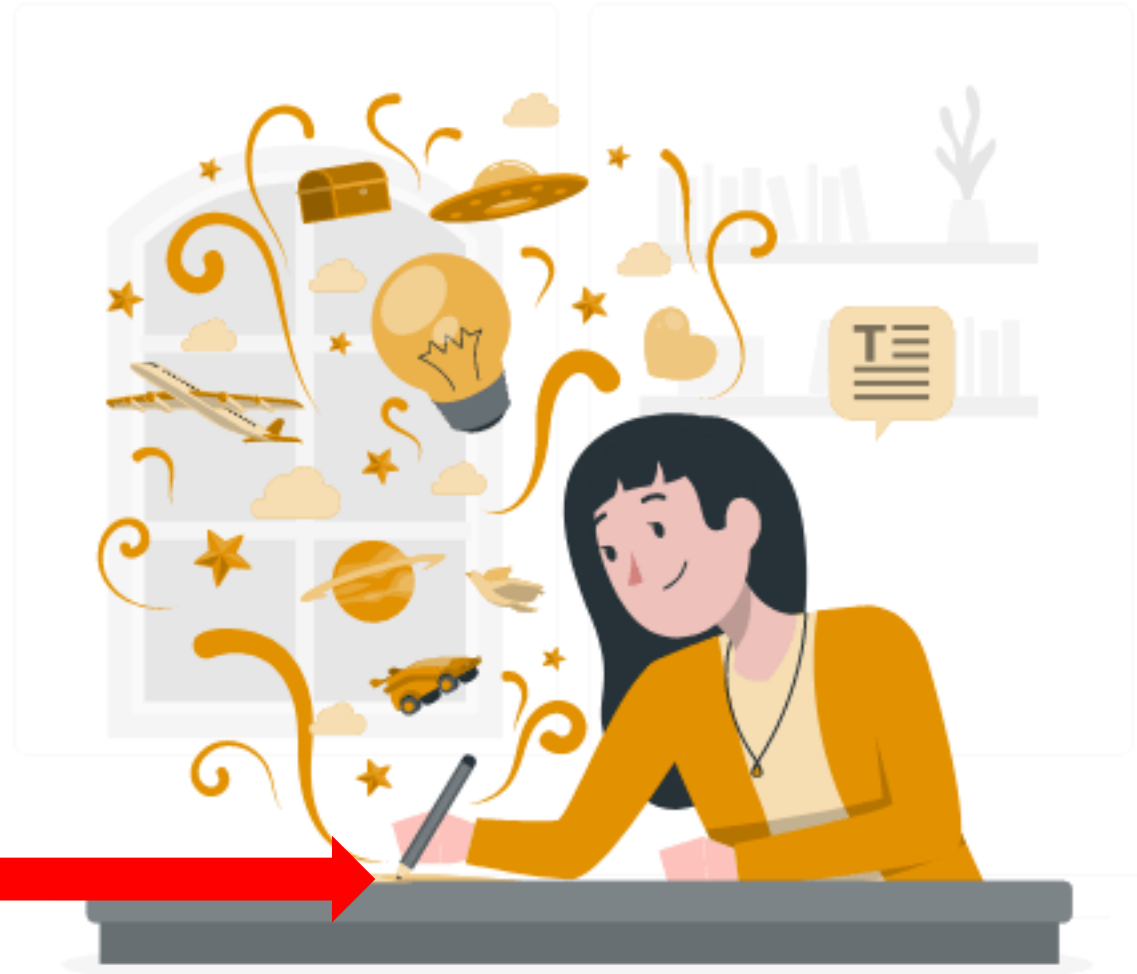
Superhero sensory garden



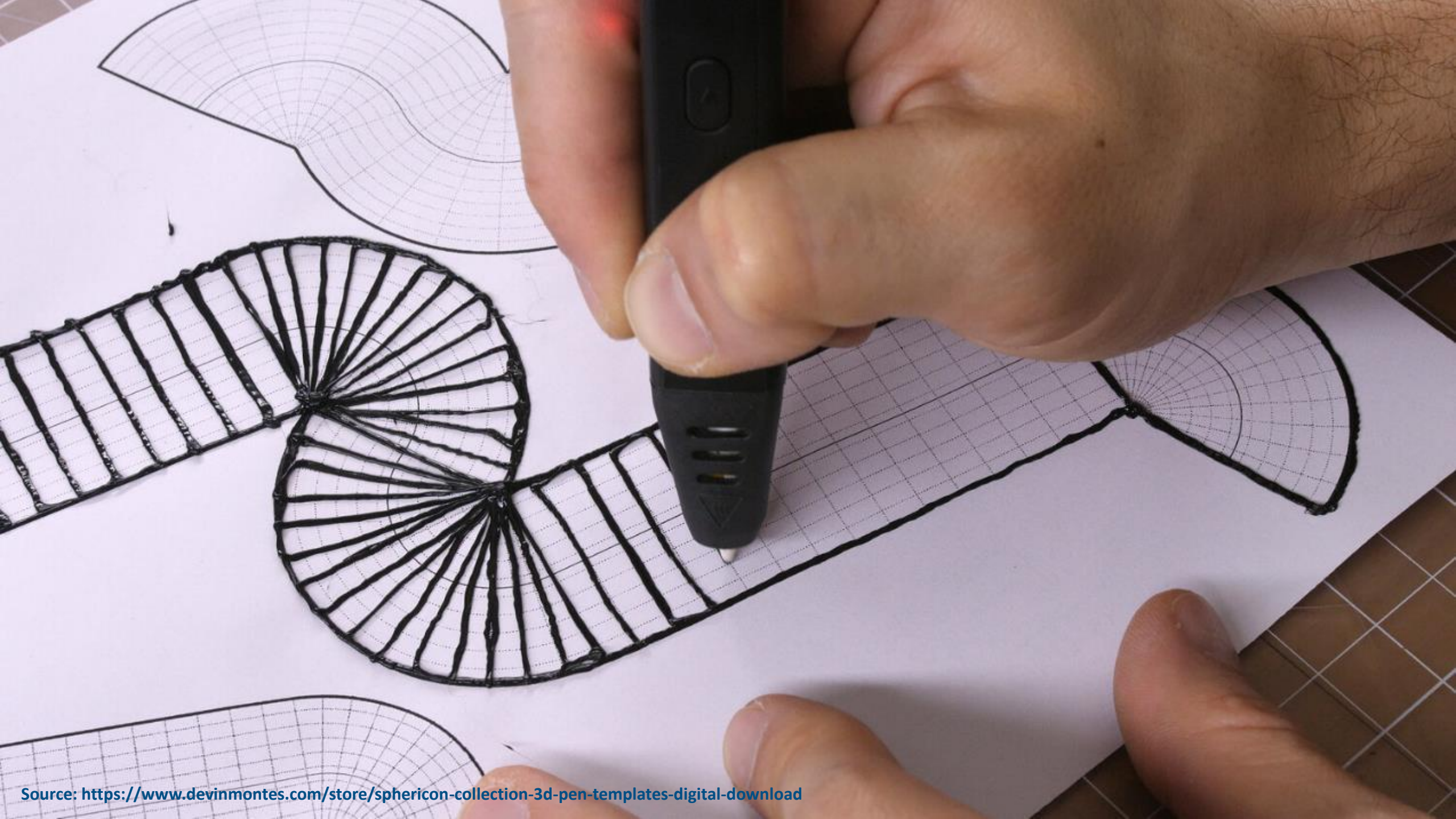
...that can be created everywhere

3D pens

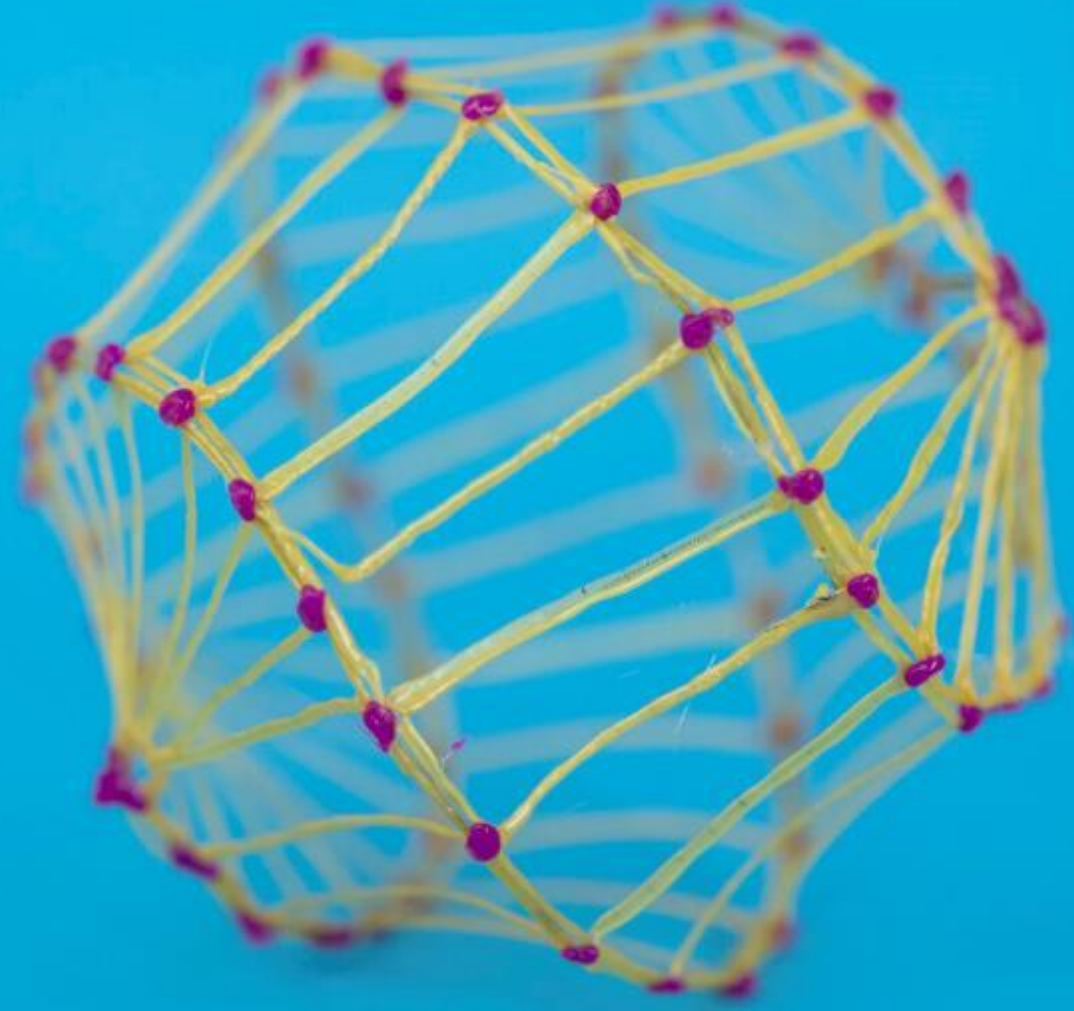
ATTENTION!
IT'S HOT!



Source: Storyset



















So what is the design challenge?



MODULE 1 – FINGER LABYRINTH

A finger labyrinth in the form of a sensory board that is located on a backrest or side of a seating. A safe place that you can hide in and use to focus on the activity of touch and play.



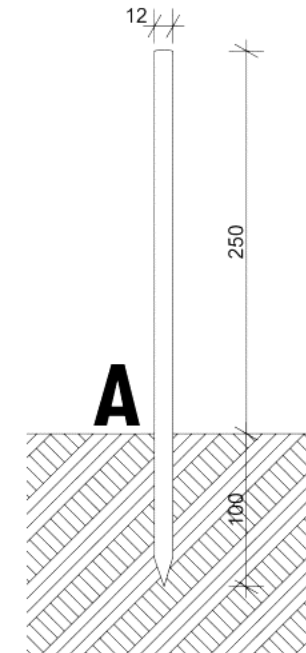
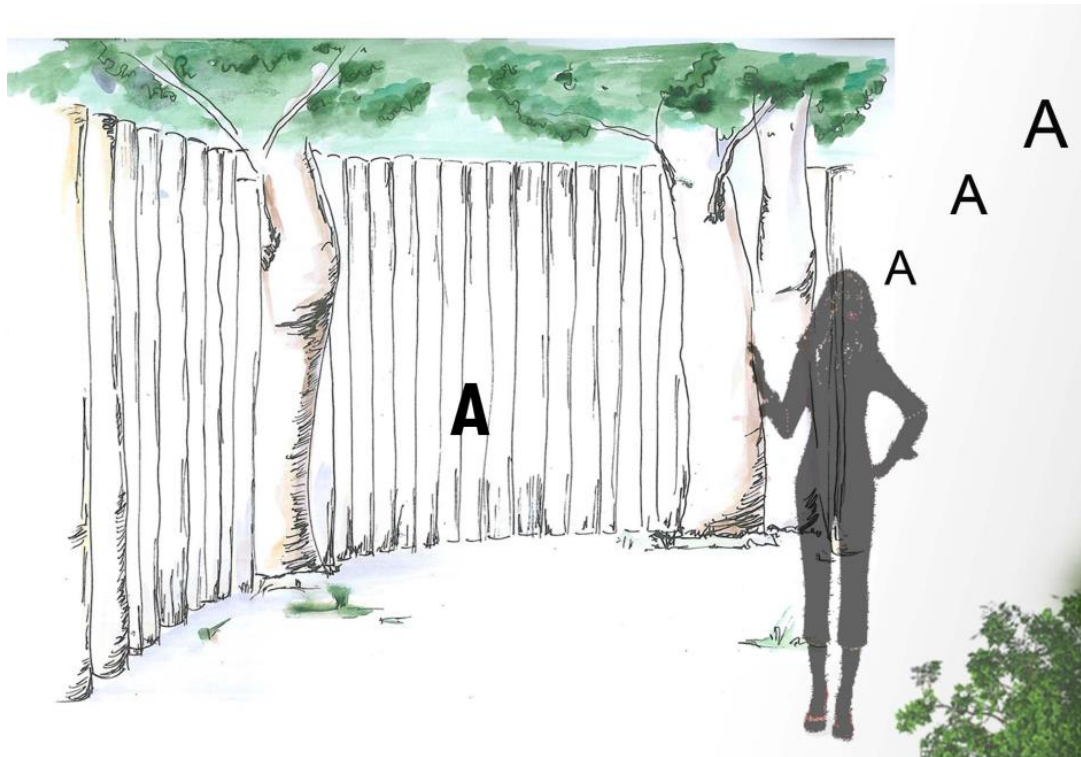
MODULE 1 – FINGER LABYRINTH

Design with a 3D pen what this finger labyrinth could look like so that you would be really excited to use it!



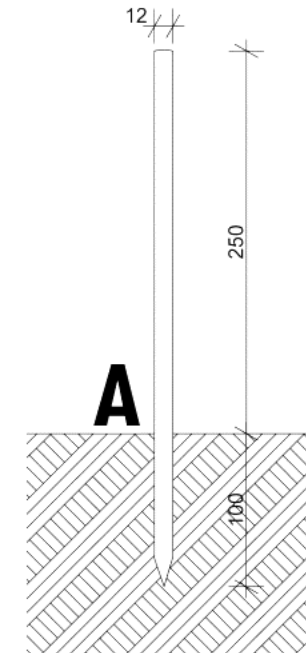
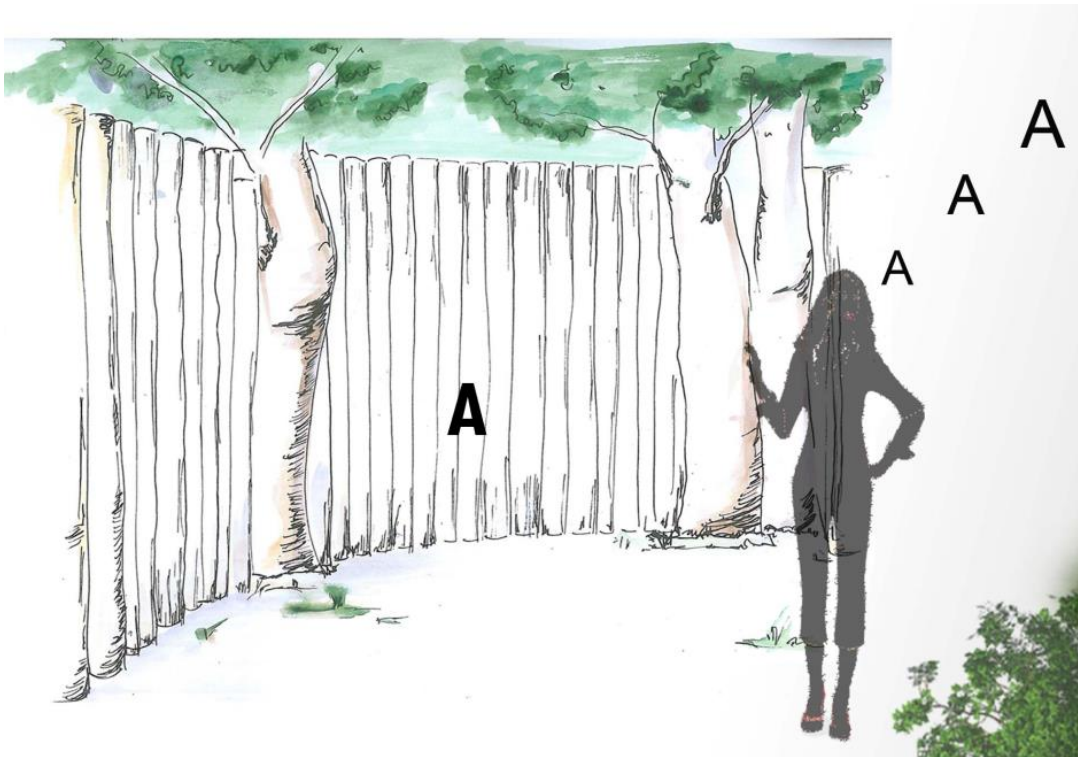
MODULE 2 - THE WELL OF SCREAMING

Stand in the middle of a well made of a palisade and shout as loud as you can. Scream as hard as you can, as loud as you can breathe. Now shout in a voice interrupted, and then again in one long voice. Sing any song, bales loudly. What counts here is the strength and energy that is in you. Realize it and liberate it.



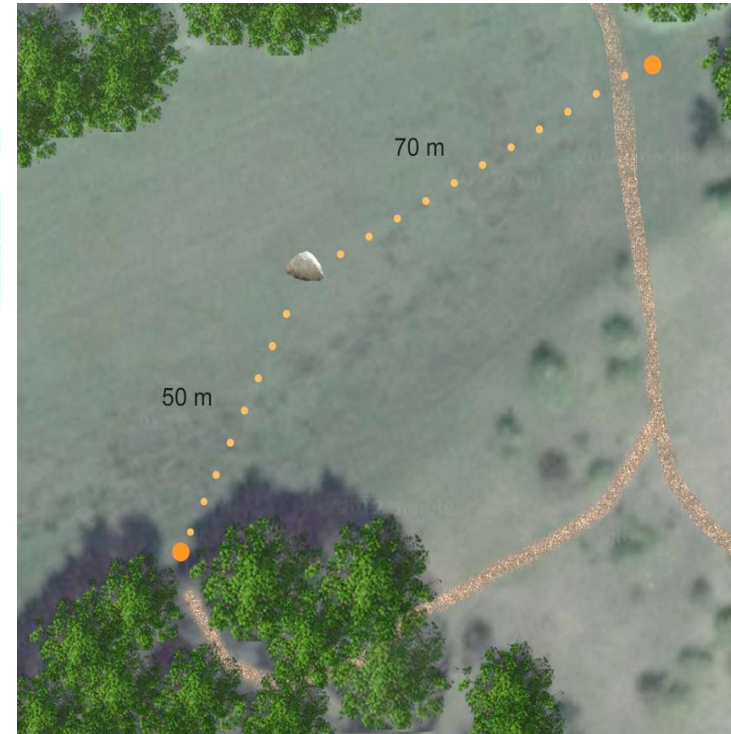
MODULE 2 - THE WELL OF SCREAMING

Design with a 3D pen what this well of screaming could look like so that you would be really excited to use it!



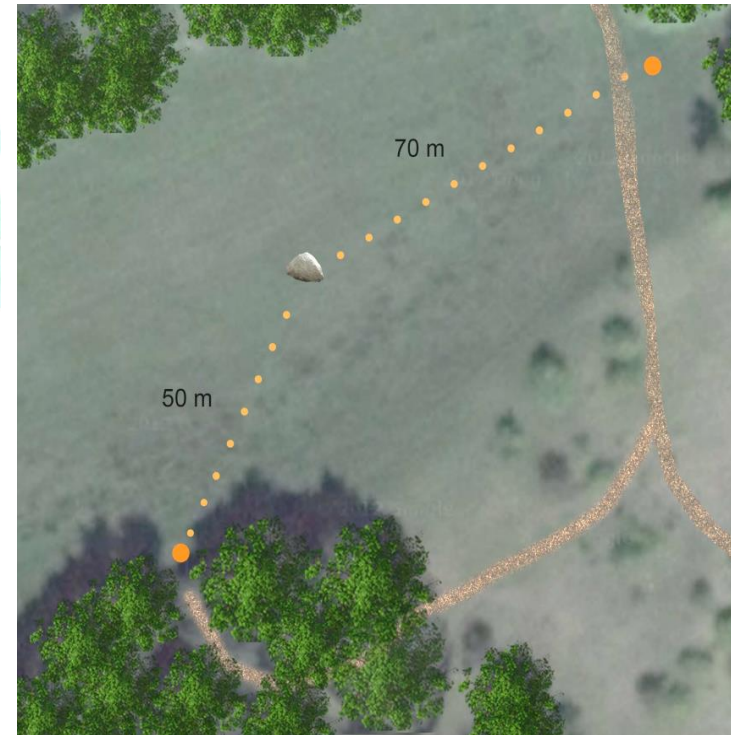
MODULE 3 - CONCENTRATION ON THE POINT

Sit comfortably and look at the boulder in front of you. Focus all your concentration on it, but do not analyze its construction. Observe only the stone, without judging its individual values. Your eye is a scanning camera. If any thoughts arise in your mind, focus again on observing the boulder. During the exercise, it is important that you sit comfortably and slowly even out your breathing.



MODULE 3 - CONCENTRATION ON THE POINT

Design with a 3D pen what this concentration point could look like so that you would be really excited to use it!



MODULE 4 - SILENCE TUNNEL

Sit or walk slowly in the wisteria tunnel. Enjoy the colors and shapes of the inflorescences. Admire how sunlight illuminates plant structures and creates streaks and spots of light and shadow in the tunnel space. Appreciate the richness of nature and the peace and tranquility of communing with nature.



MODULE 4 - SILENCE TUNNEL

Design with a 3D pen what this tunnel could look like so that you would be really excited to use it!



MODULE 5 – LISTENING TO NATURE



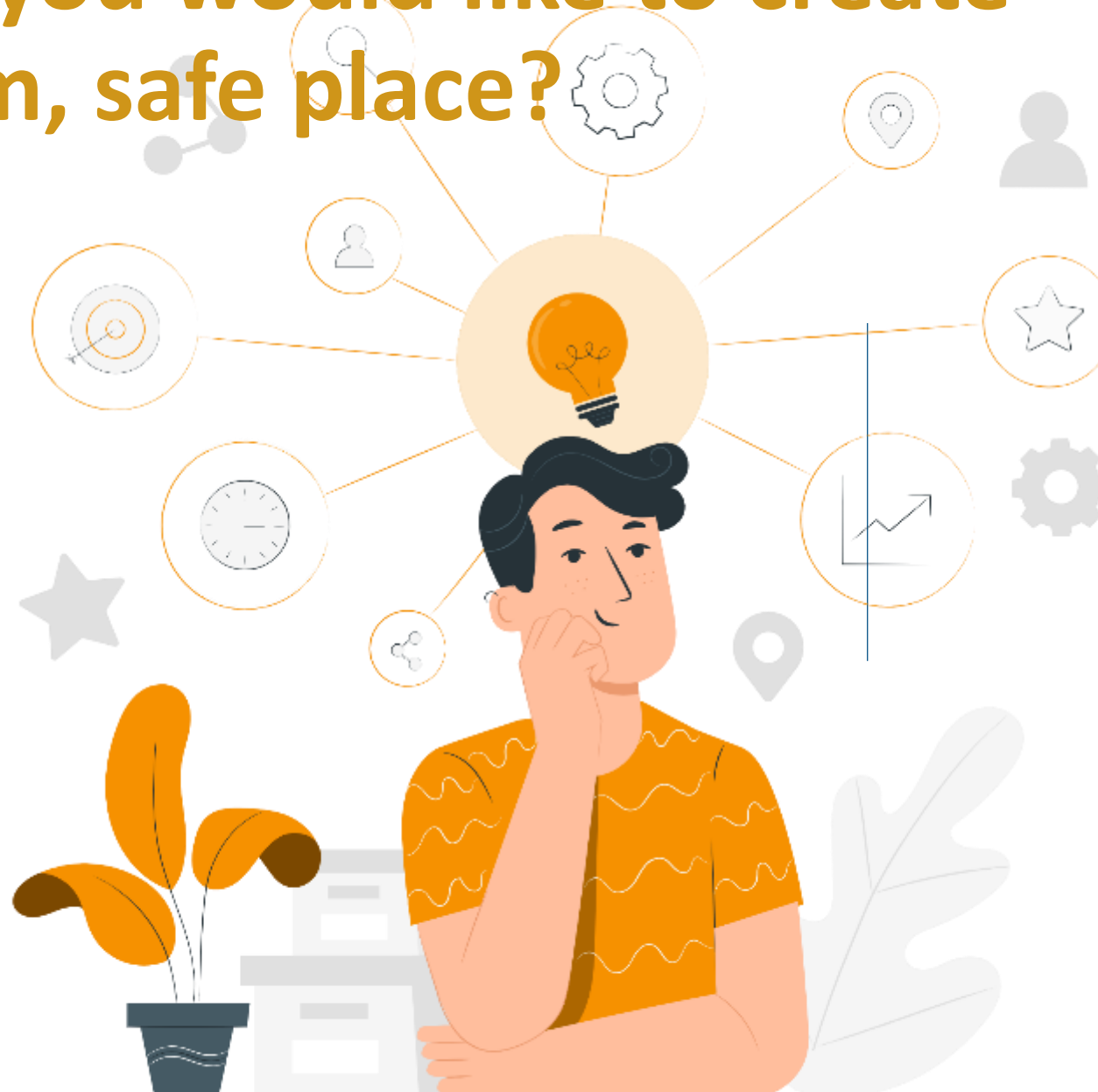
Close your eyes and Focus on the sounds that reach you. Concentrate on those that are far away. Take a moment. Now discover those sounds that are close to you. Listen to them. Then try to recognize the sounds that are far away again.

MODULE 5 – LISTENING TO NATURE



Design with a 3D pen what those listening tubes could look like so that you would be really excited to use them!

Or maybe you would like to create your dream, safe place?







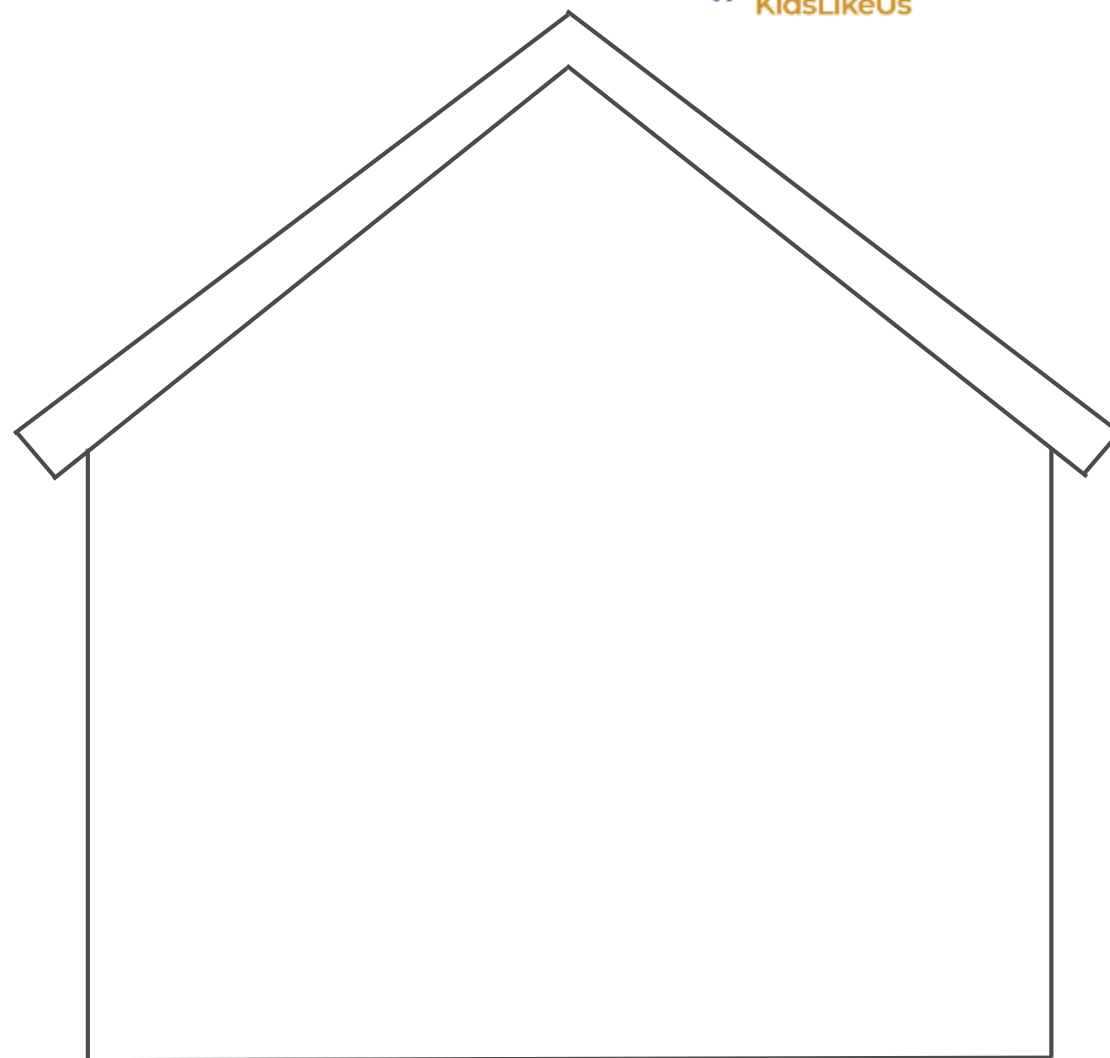
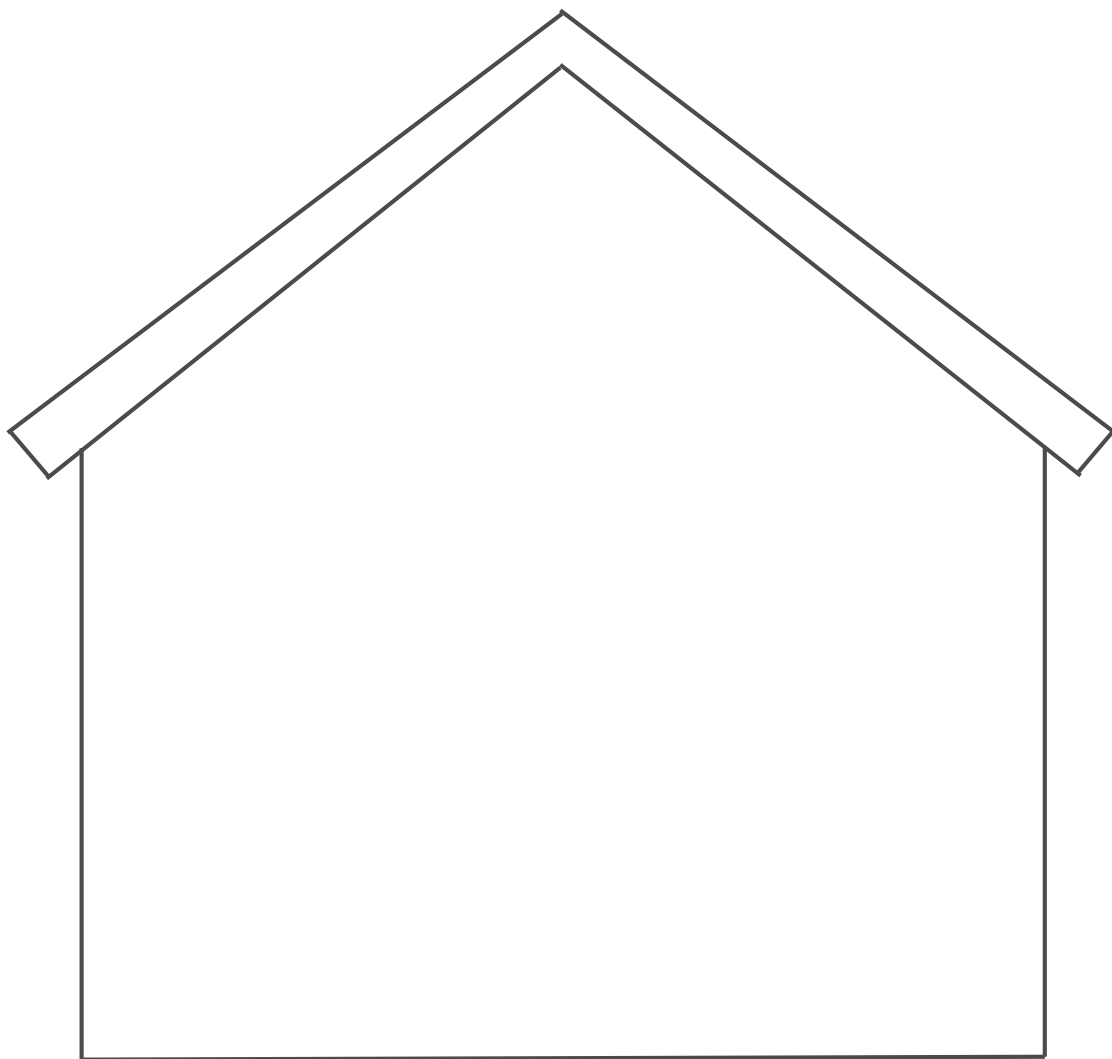


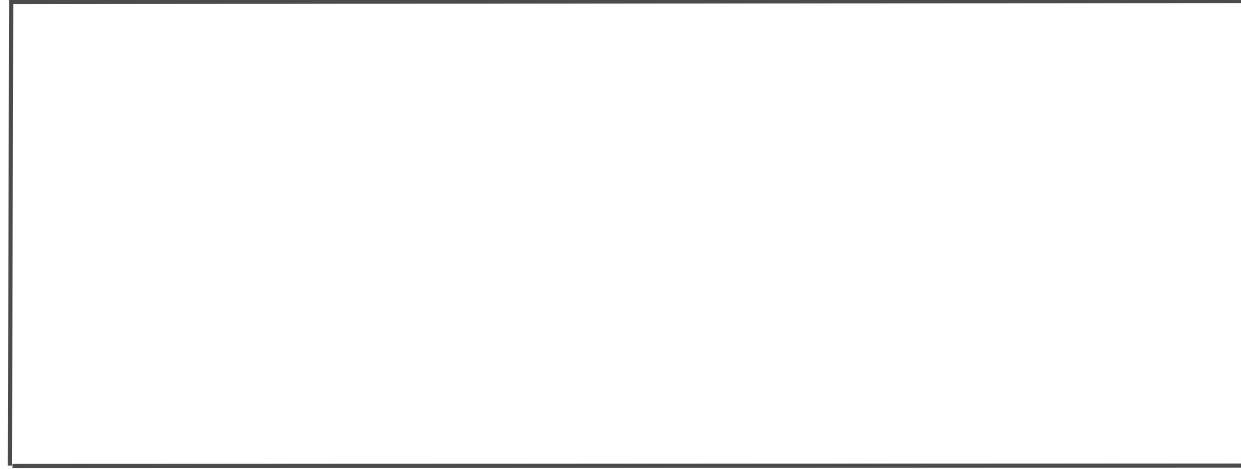


Let's do it!

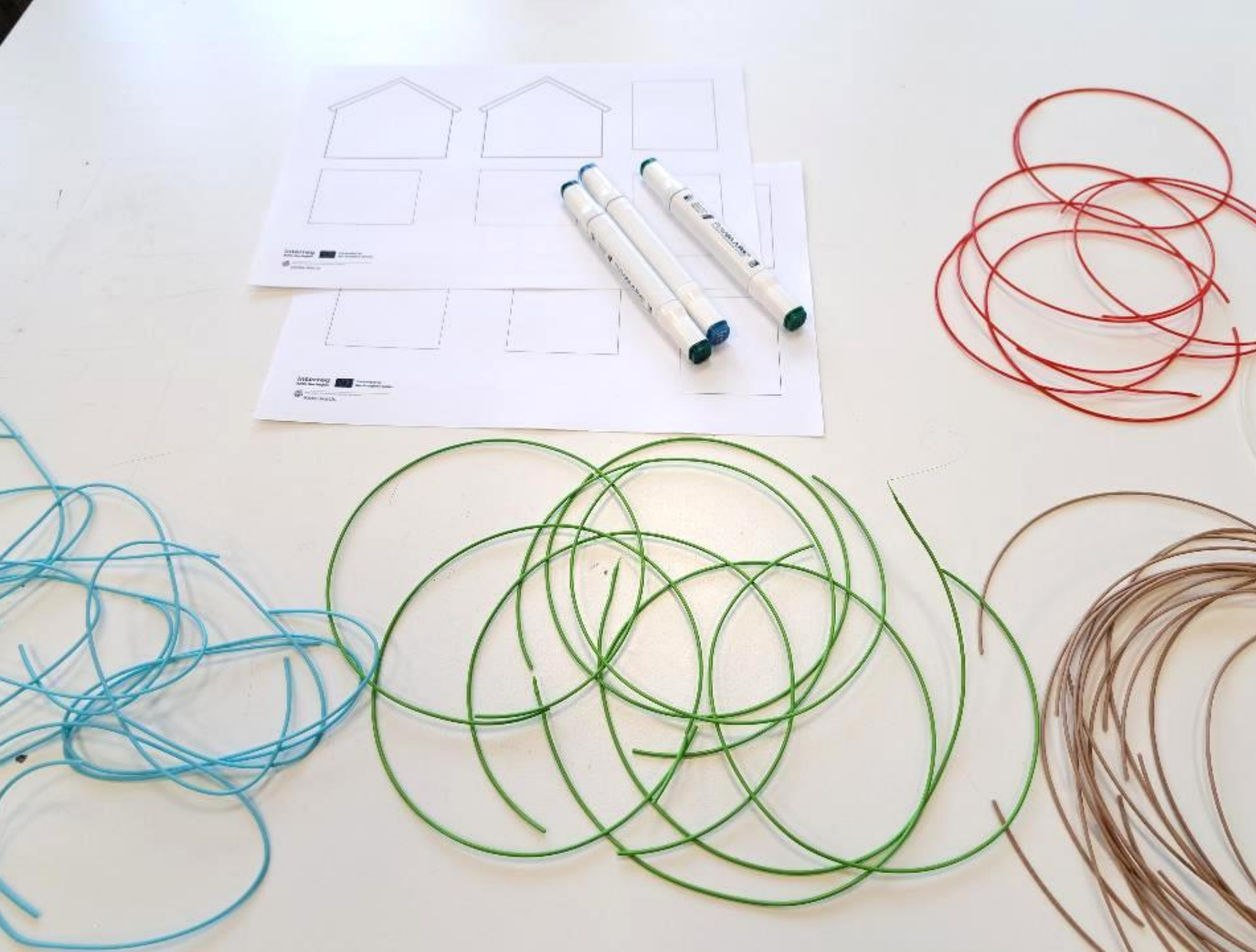












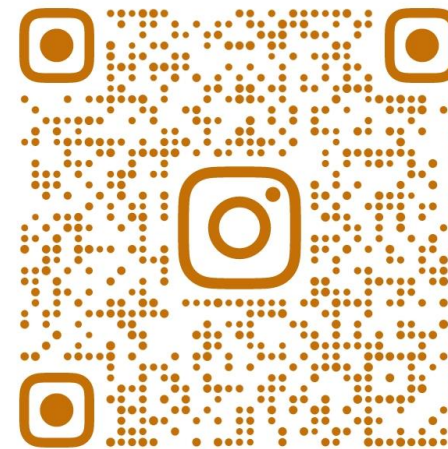






Find out more about our project!

This material was developed within the project “KidsLikeUs : Empowering NGOs & public institutions in helping children overcome migration traumas using creativity and favors of nature”, co-financed by European Union funds (European Regional Development Fund) from the INTERREG Baltic Sea Region program.



@DESIGN_FOR_A_BETTER_FUTURE



<https://www.facebook.com/KidsLikeUs.InterregBSR>