



HOW TO EMPOWER REPAIR IN A LOCAL COMMUNITY?

LAURI MEI from PARANDUSKELDER





Non-governmental organization that teaches people how to repair their everyday items.

5 years in service (founded in 2019)

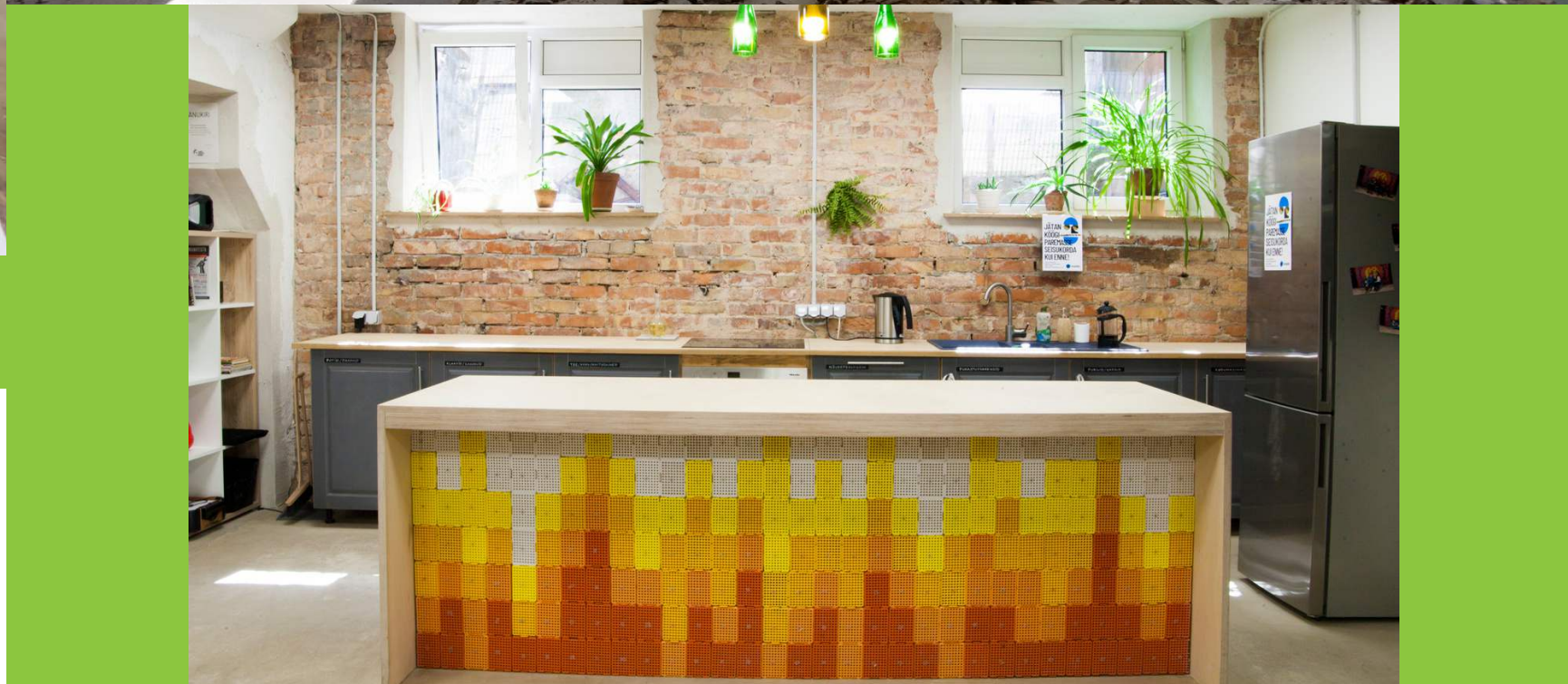
1500+ repaired items (as of 2022)

20+ repair cafes

7 employees







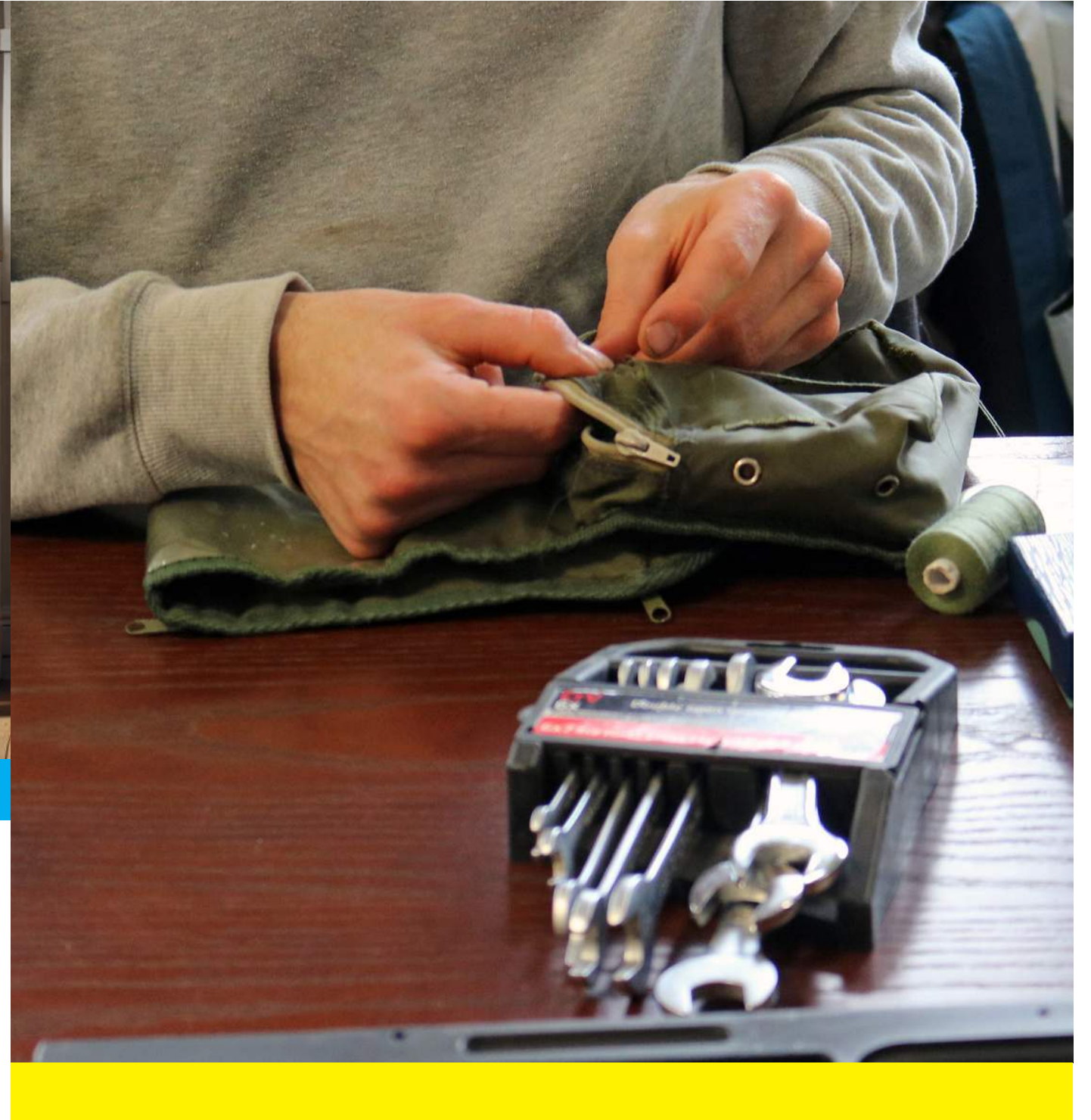


WHEN VOLUNTEERS BECOME EMPLOYEES





**Imagine a community of creators, not just consumers —
where we build, repair, and sustain what we have rather than continuously seeking to replace**



TENANT VS OWNER

- “If you can’t fix it, you don’t own it” - the repair manifesto
- Tenants lack sense of ownership
- Repair as a way to reclaim ownership



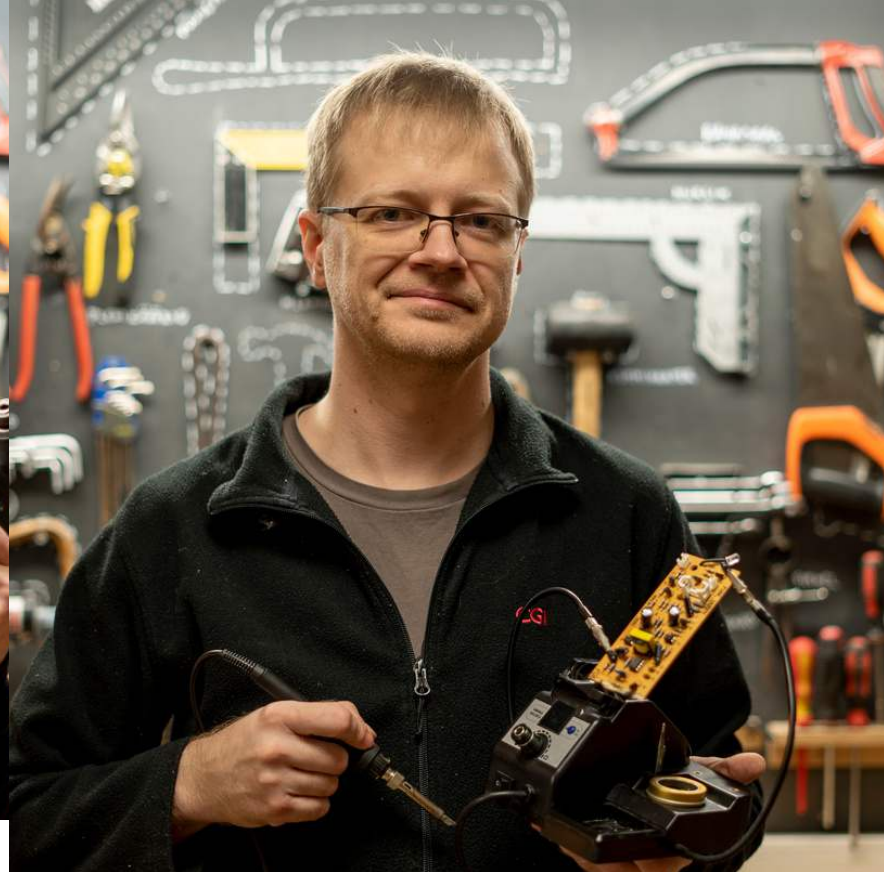
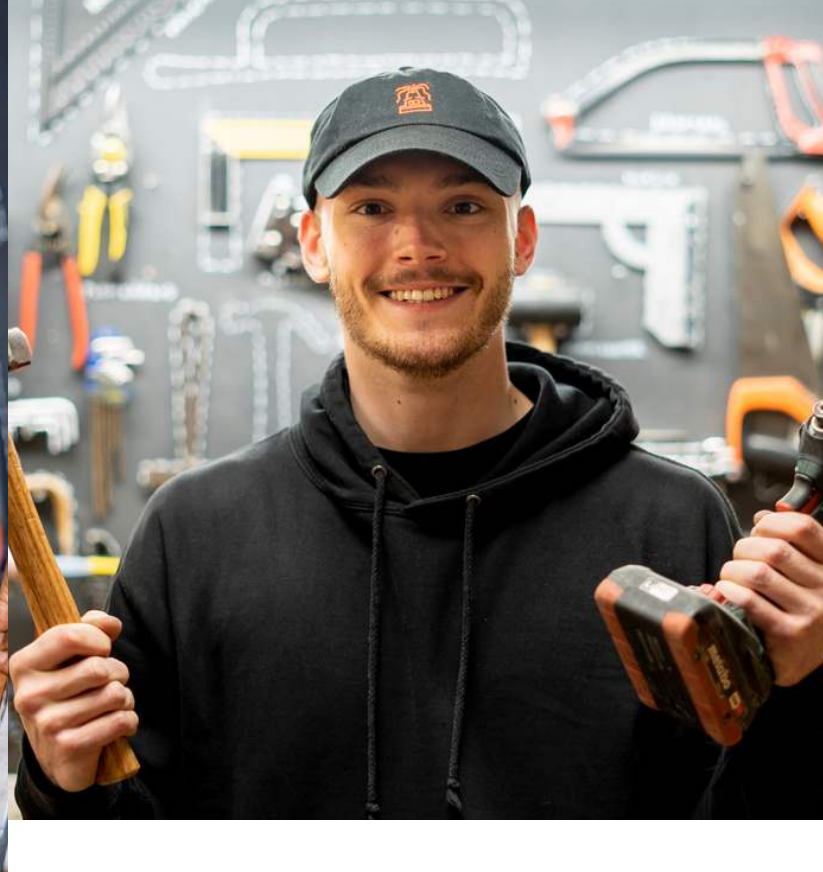
FINDING THE BUGS

- **Curiosity**
- **Exploration**
- **Small wins add up**

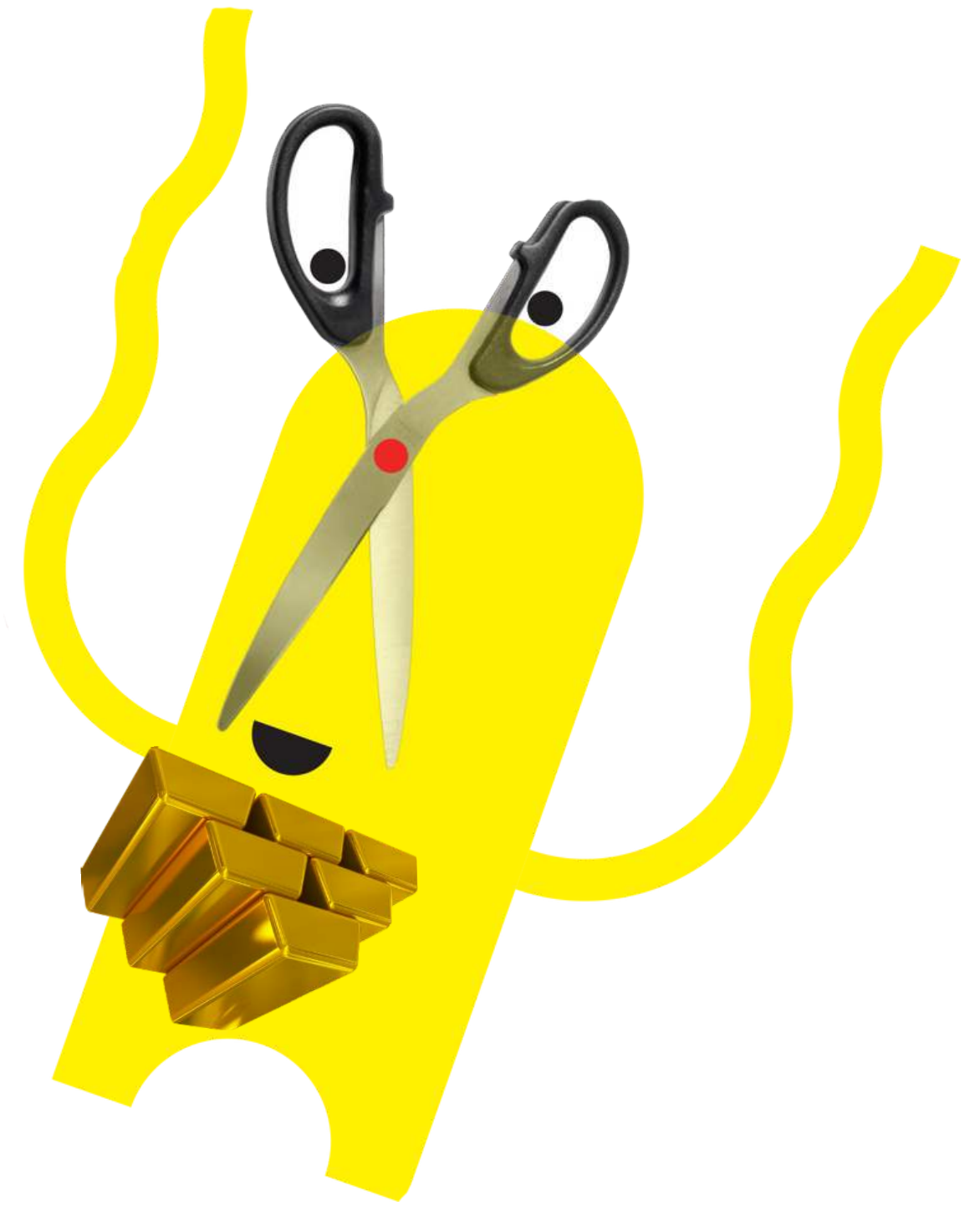


THE PEOPLE HELPING THE PEOPLE

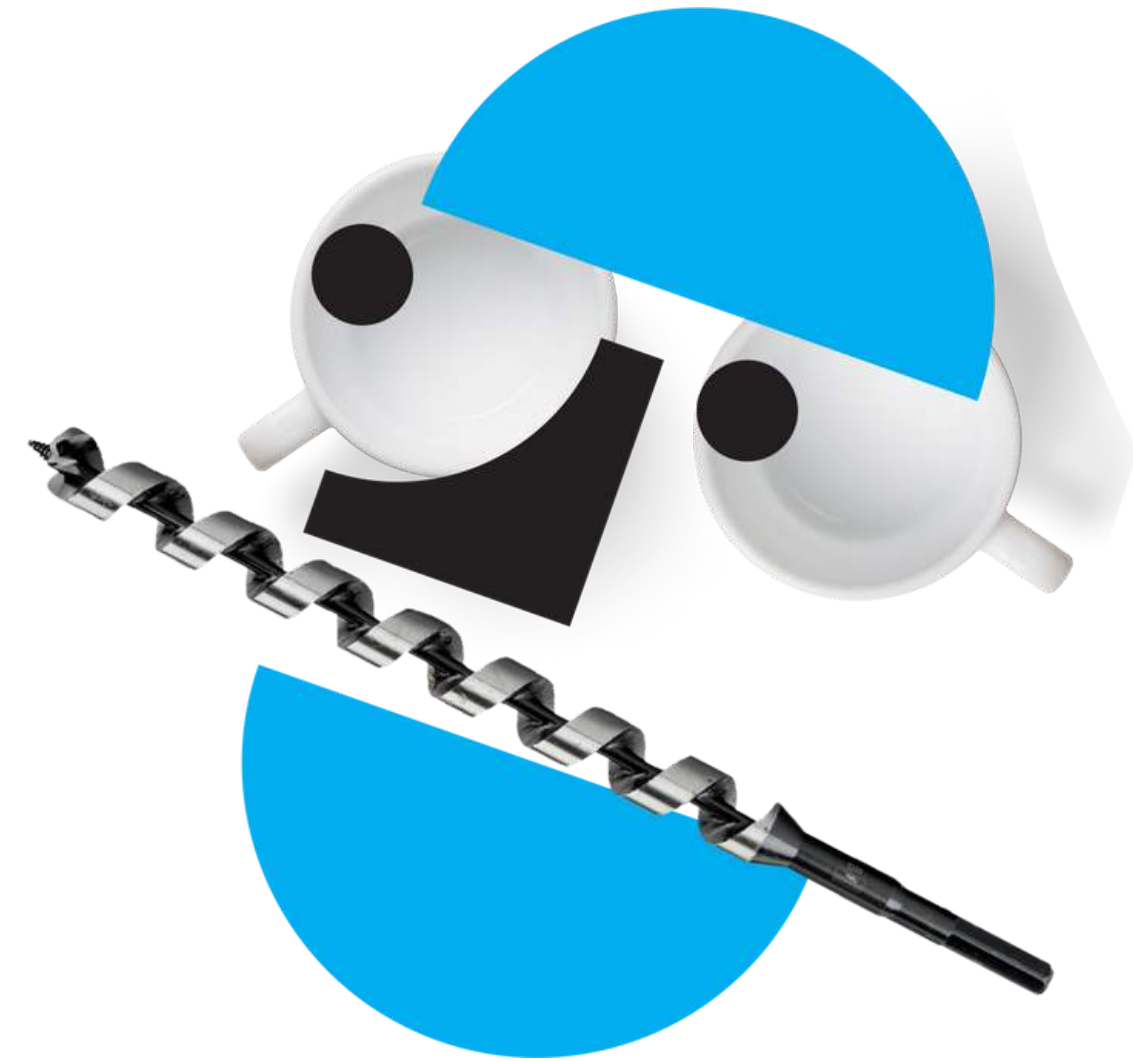
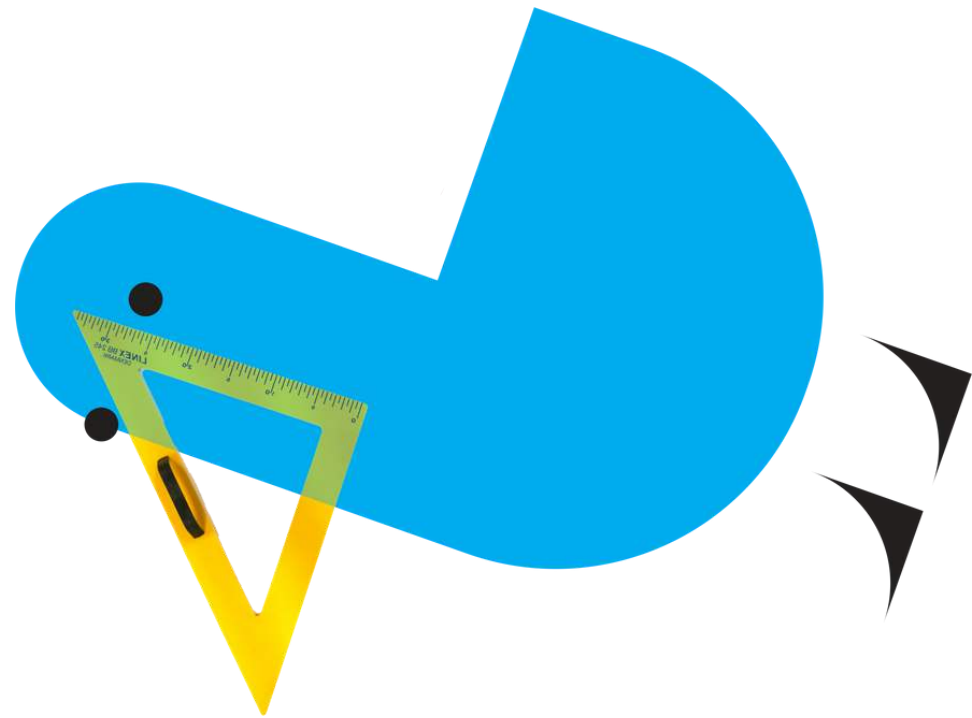
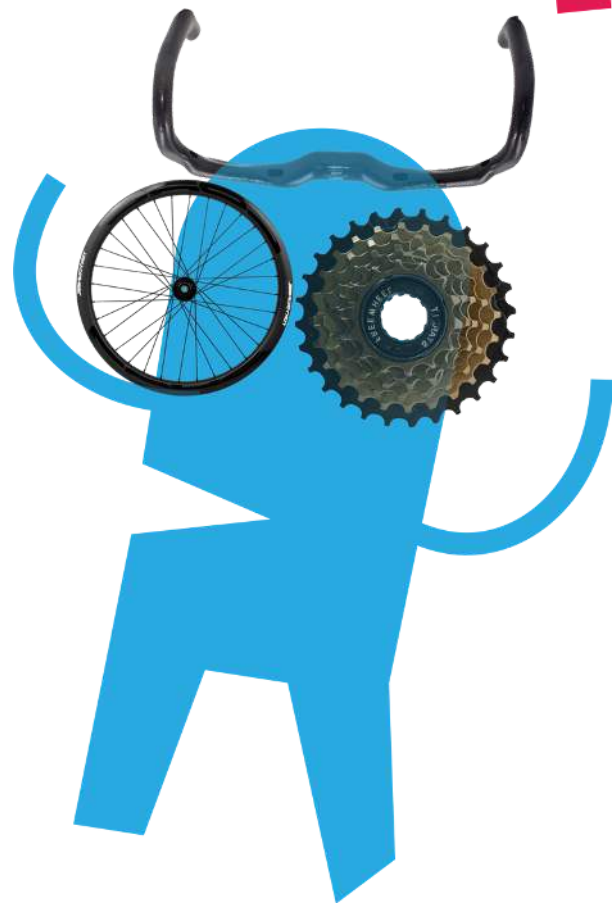
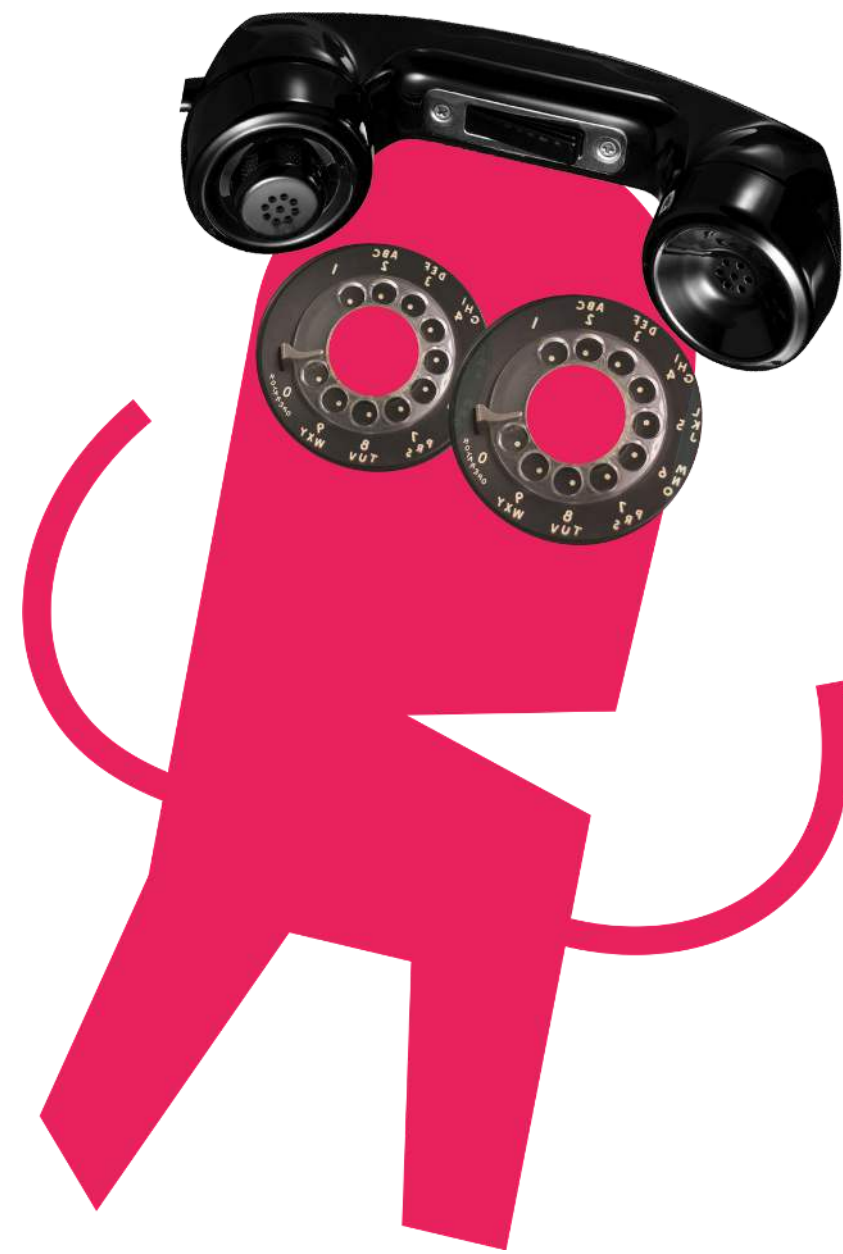
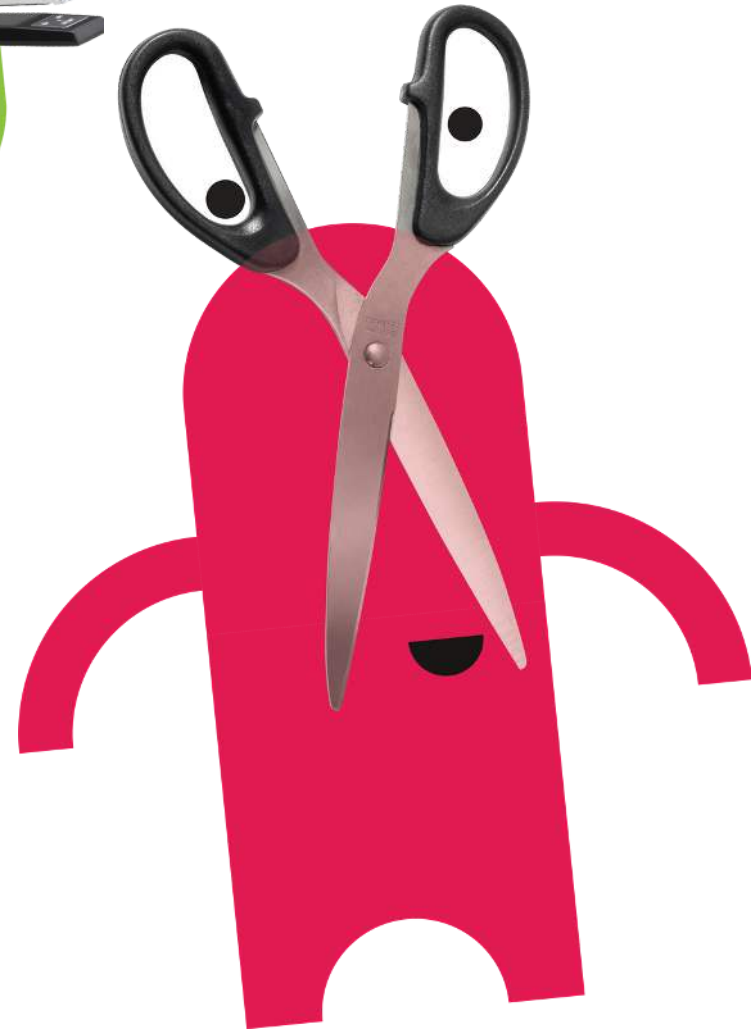
- Inclusive in nature
- The want to keep learning
- Non-judgemental







FINDING GOLD

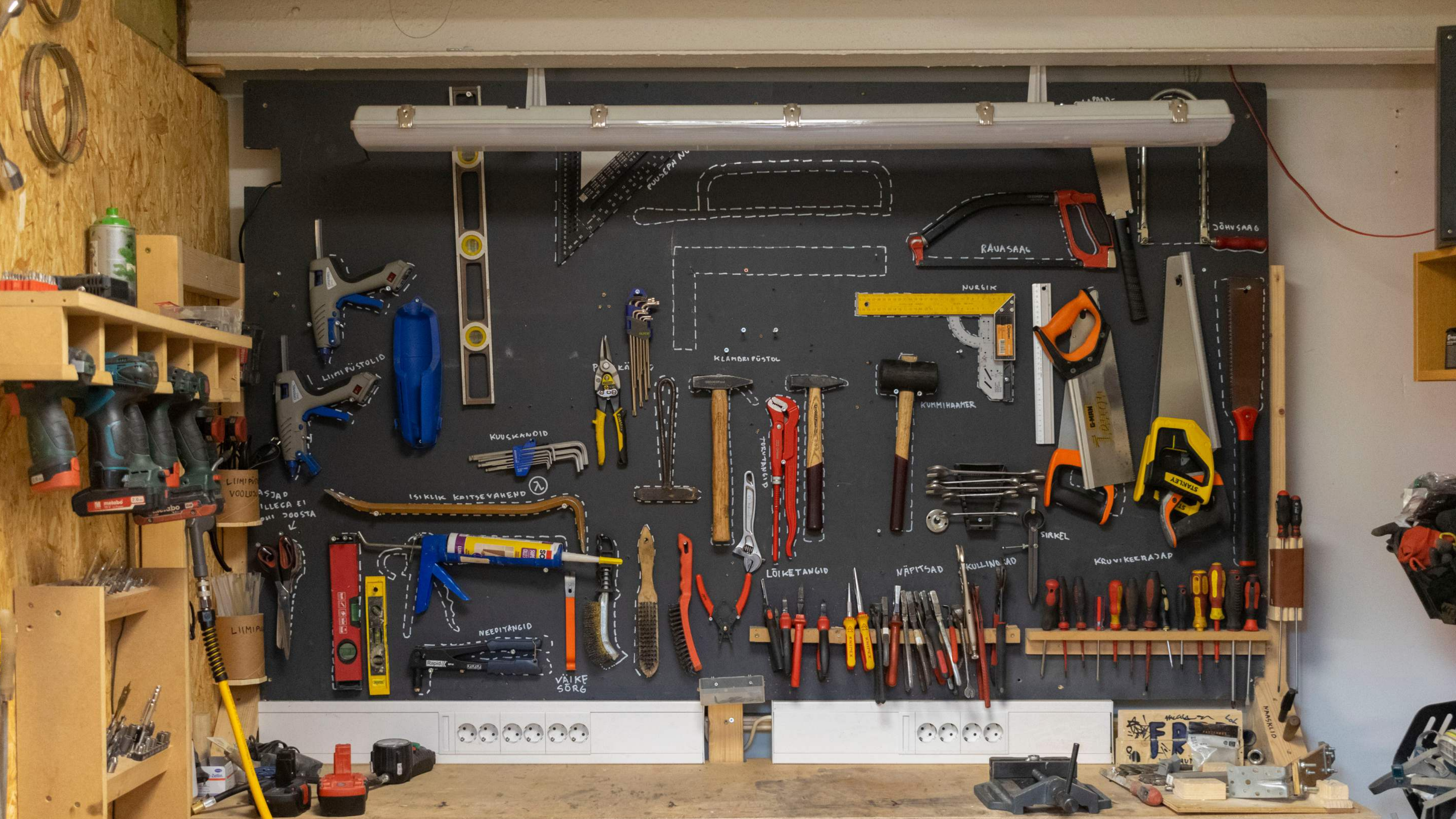






A SAFE PLACE

- Building confidence
- Empowering
- A social experience



LIIMI PÜSTOLID

LIIVI

KUUSKANDID

ISIKLIK KAITSVAHEND

NEEDITANGID

VÄIKE SÖRG

KLAMBRIPÜSTOL

RAVASAAG

NURGIN

KUMMIHAMMER

LÕIKETANGID

NÄPITSAD

KULLINGID

KRUVIKEERAJAD

SIRKEL

JÕHVSAA6

LIIMIPÜSTOL
VOOLU
ASJAD
ILLEGA EI
MHI
200STA

LIIMIPÜSTOL

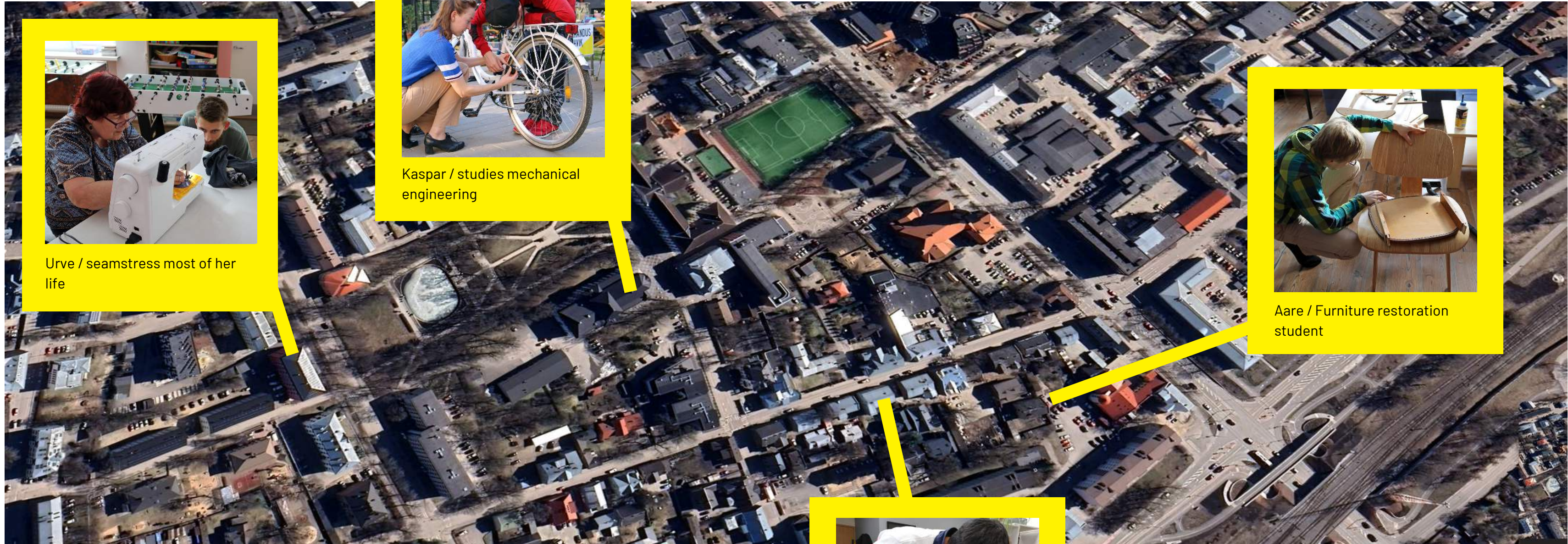
MEASON
KAL
FR
KÄSITLID





THE NEXT GENERATION

- Handing down knowledge
- Raising confidence
- Building independence



Urve / seamstress most of her life



Kaspar / studies mechanical engineering



Aare / Furniture restoration student



Martin / electrical engineer

KNOWING THY NEIGHBOUR

- Engage within the community
- Sharing tools and knowledge
- A helping hand when in need



Take Action

Try one repair / visit a Repair Café / start a local initiative.



THANK YOU!

Lauri Mei

board member

lauri@paranda.ee

www.paranda.ee

facebook.com/paranda.ee



Paranduskelder