

# Regional service on ecosystem sensitivity to spills – EcoSensitivity tool

Helsinki | 06.03.2024

Anneliis Kõivupuu

Jonne Kotta, Mihhail Fetissof, Robert Aps, Merli Rätsep,

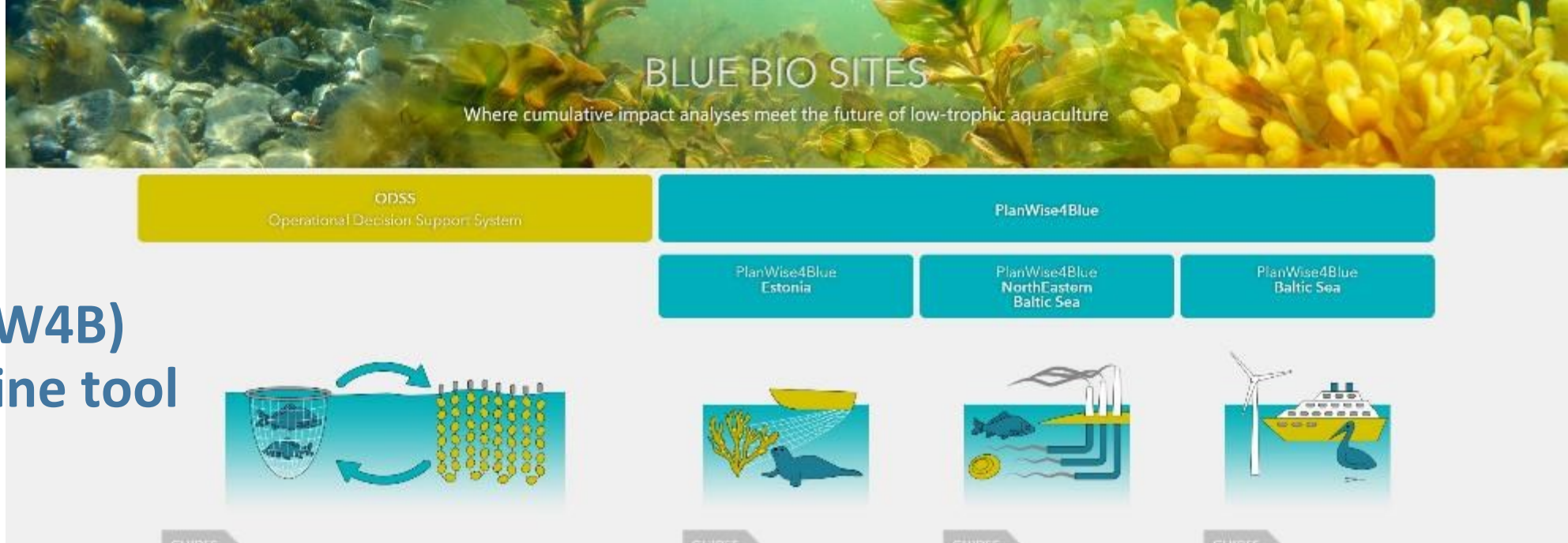
[interreg-baltic.eu/project/openrisk-ii/](https://interreg-baltic.eu/project/openrisk-ii/)



# Regional service on ecosystem sensitivity to spills

Will be developed by Tartu University in cooperation with Helsinki University and the other Project Partners

- Use & validate regional service on ecosystem sensitivity to spills



## PlanWise4Blue (PW4B) Simple-to-use online tool

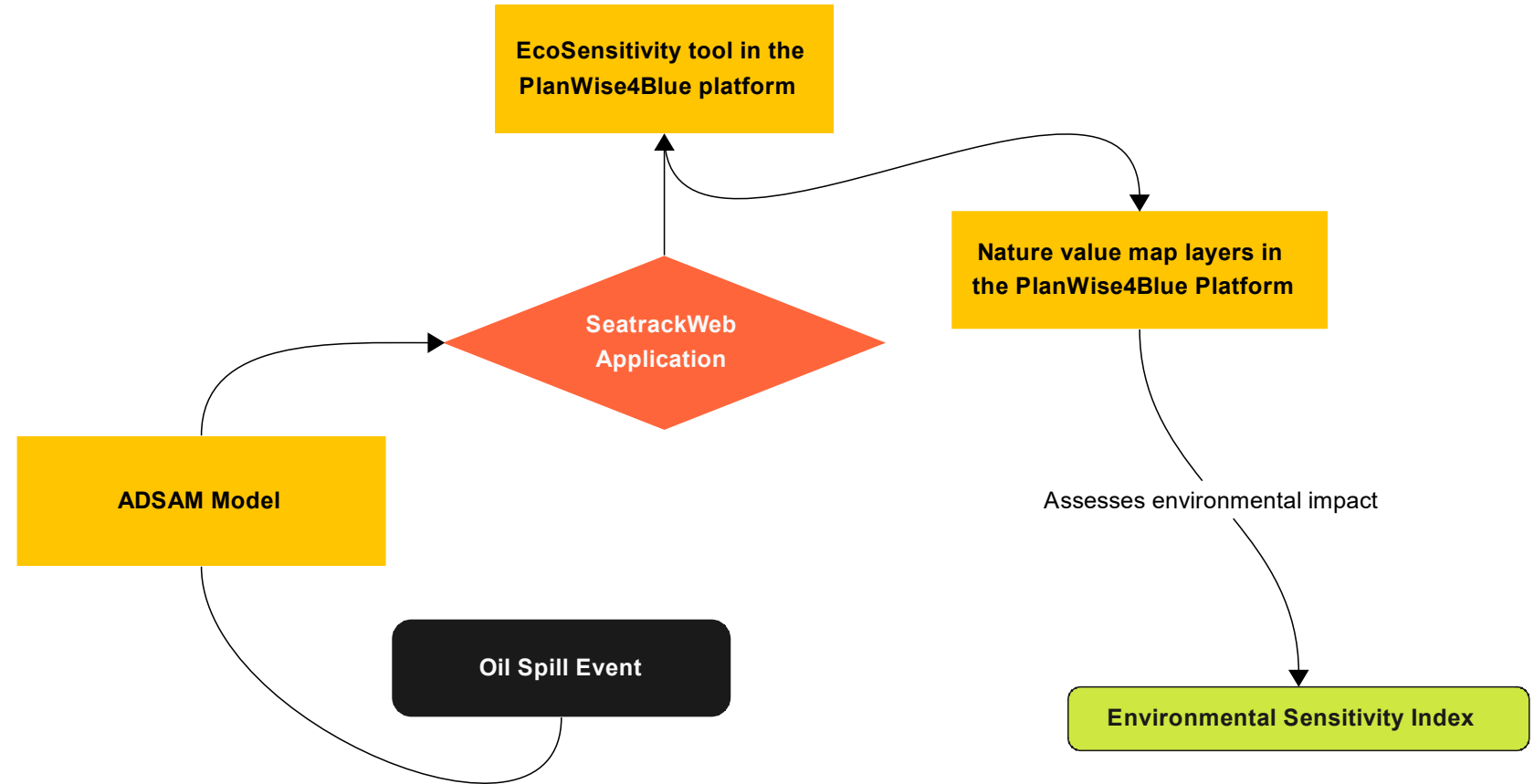
Assess **cumulative human impacts** on key **ecosystem elements** at 1 km<sup>2</sup> spatial scale

- 1. **Combines** layers of key **nature values** (e.g. maps of valuable habitats, birds)
- 2. Polygons of **human pressures** (e.g. maps of oil spill from e.g. Seatrackweb)
- 3. **Contain rules** (knowledge) on how different human pressures (including oil spill) affect different nature assets
- 4. **Quantifies environmental impacts of these pressures** based on the current best available knowledge and data

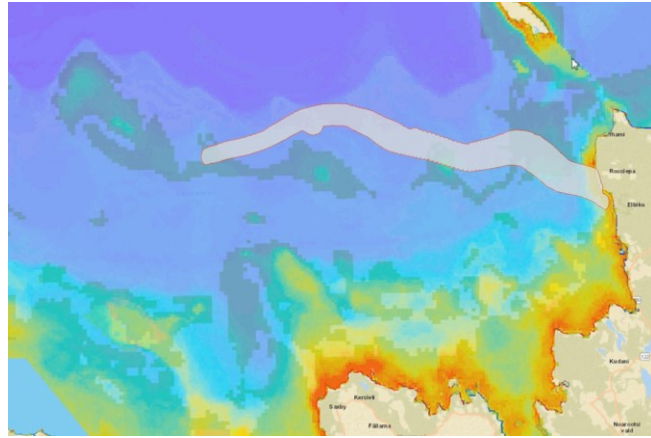
# Concept 1: Real response

## Data flow and analyses in the planned EcoSensitivity tool

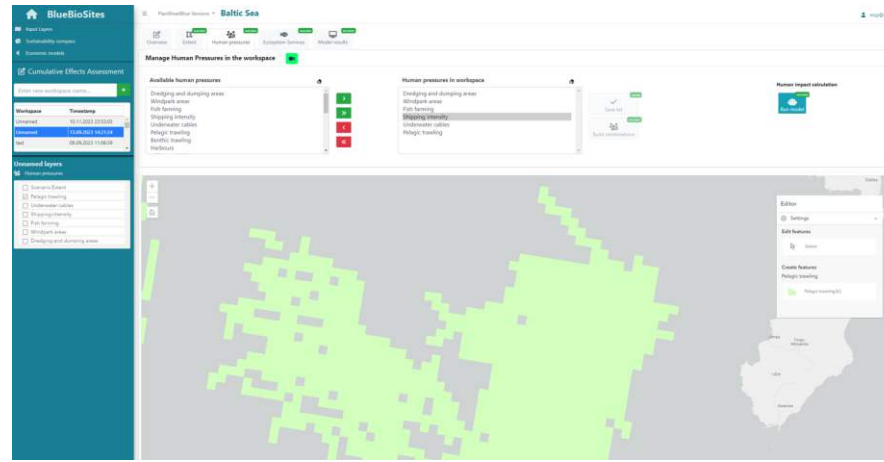
- Best solutions for **minimizing environmental risks** by targeting rescue operations to the areas where oil spills and damage to natural assets are most likely to occur under given weather conditions



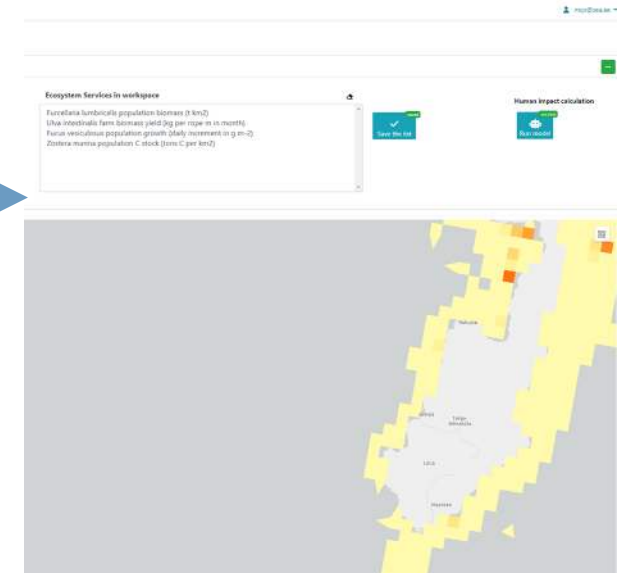
# SeatrackWeb



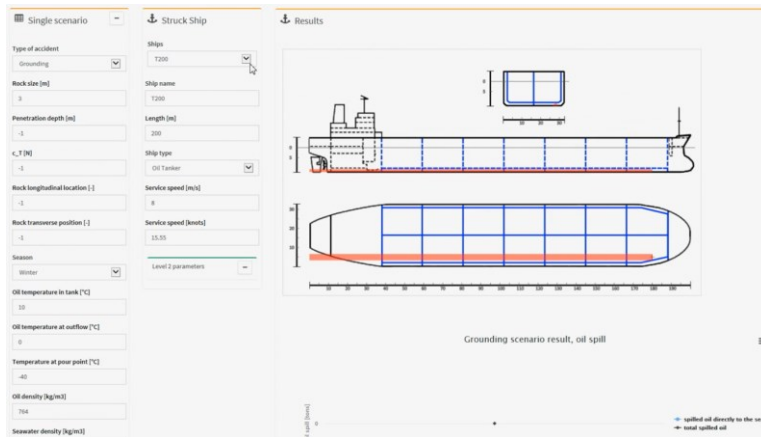
# PlanWise4Blue: human pressures (oil spill)



# PW4B: Nature values



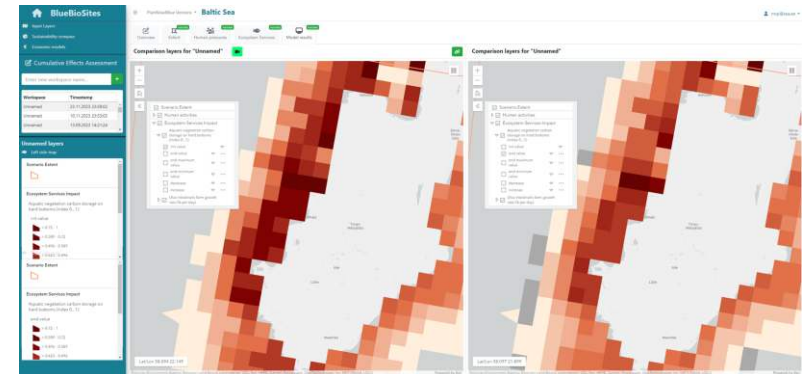
# ADSAM module



# Oil spill event



# PW4B: Calculating impacts (Environmental Sensitivity Index)



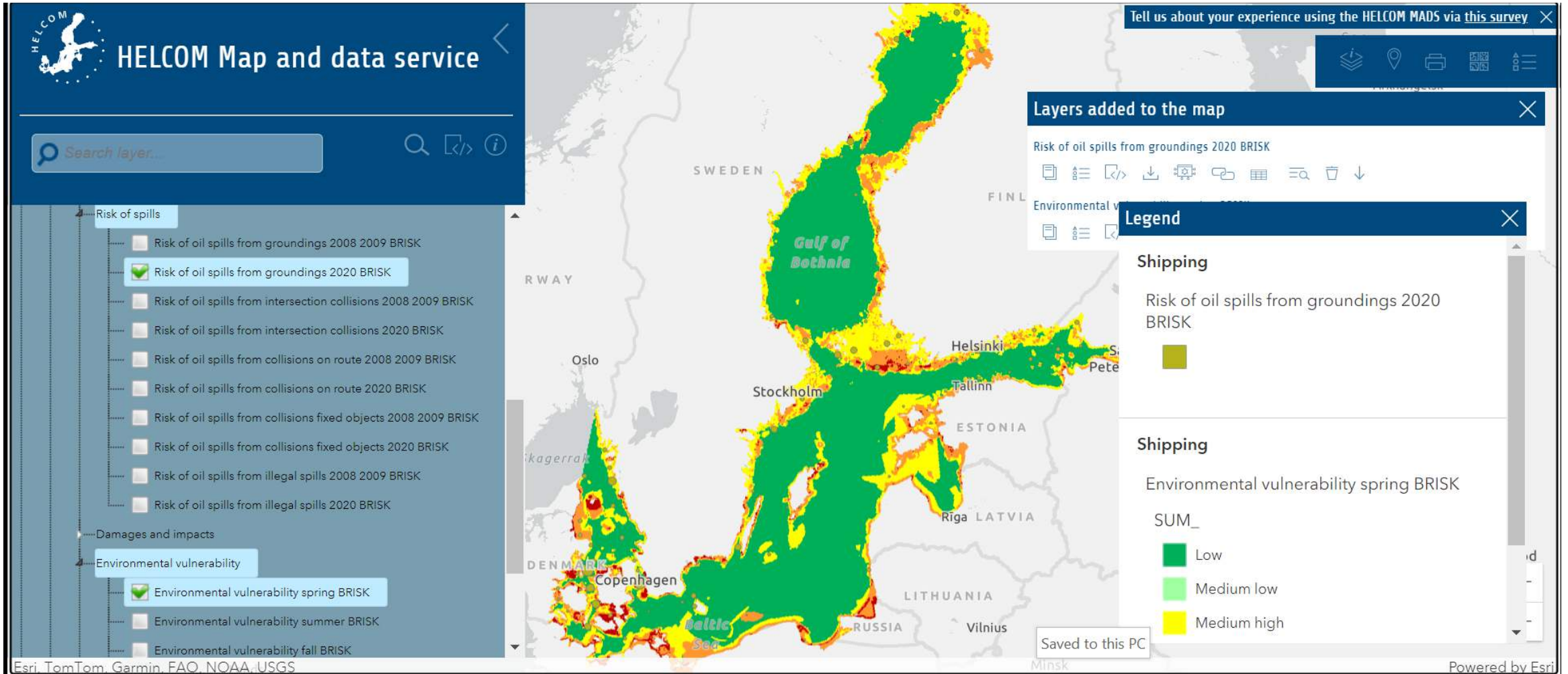
# Current uncertainties about concept 1

1. Currently, we don't have enough knowledge and information about the new fuel types most commonly used in the Baltic Sea.
  - Ultra Low Sulfur Fuel Oil (ULSFO) etc.
2. In what timeframe will the new fuel types be added to the SeatrackWeb application etc. and is it feasible with our timeframe?



# Concept 2: Strategic planning

## What's already there and what's coming?



What are the realistic development opportunities?

Mapping stakeholder needs and interests?





# Thank you!

**Interreg**  
Baltic Sea Region

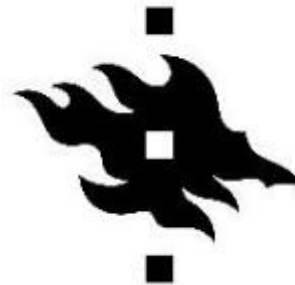


Co-funded by  
the European Union

 SUSTAINABLE WATERS  
**OpenRisk II**



UNIVERSITY  
OF TARTU



UNIVERSITY OF HELSINKI