



One citizen, a plan, a place – Guldborgsund, Denmark



Guldborgsund municipality aims to develop a method that empowers citizens to better manage their everyday lives and thus to be able to manage education, work and their own lives without or with some support from the municipality.

Therefore, the pilot in Guldborgsund will work towards greater involvement of residents, civil society and businesses and an interprofessional municipality.

WHY | Purpose

The challenge of the pilot project is to increase the involvement and empowerment of the city's residents. It is important to work interprofessional and to develop new methods of collaboration, which is currently difficult because of the way municipalities are organised.

The pilot will challenge this and create an administration that enables citizens to better manage education, work and their own lives without or with less municipal support. The pilot focuses on an area where such important measures are needed because psychosocial challenges predominate in the neighbourhood and the proportion of people who are not connected to the labour market or education is high.

Ultimately to create an administration that can apply methods where interprofessional cooperation becomes more natural and thus optimises case management.

HOW | Field of Action

- Through the Liveability project, the goals of the pilot becomes achievable as local stakeholders and partner organisations work together and share their knowledge.
- By means of the project, change agents are empowered to implement public interest design methods to create a learning, collaborative, and participatory administration. After this process and PID methods have been tested in the pilot, they can be extended to other areas of the administration as well.

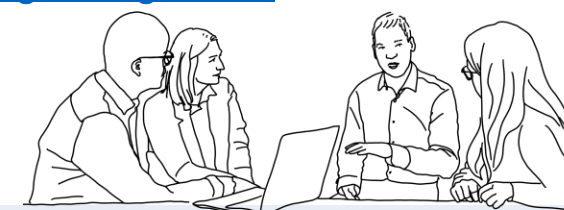
WHO | Actors

- Stakeholders from social housing masterplan,
- Østerbro School and Sophie School,
- Authority from the employment area (municipality),
- Authority from children and family services (municipality),
- Authority from social services (the municipality),
- Youth education counselling citizens

Contact

Lone Gjerulff Bak | Change Agent | lgb@guldborgsund.dk

Gitte Jensen | Change Implementer | gisj@guldborgsund.dk



"As a municipality, we need to think in new directions toward more citizen involvement and centralized case management. We must provide our citizens with a better service and adapt to new legislation in the social area." - Gitte Jensen, PID Implementer, Guldborgsund municipality