

# ELWIND

## Estonian - Latvian hybrid offshore wind project

**Tõnn Tuvikene**

ELWIND project manager

# What is ELWIND?

**ELWIND** is a joint **Estonian-Latvian** state-run cross-border **offshore** wind project aiming to raise **energy independence** in the region by increasing production of **green energy** and improving **interstate electricity connectivity**.

**Wind parks + hybrid interconnector**



# Why this way?

- Providing **regulatory and business predictability** to market participants, by taking care of the permits and conducting technical and EIA studies.
- Meaning Estonia and Latvia predeveloping two offshore areas and **auctioning these out with certainty of grid connection.**
- This will **mitigate the risks** and insecurities of the development for the interested parties.
- Planning to apply for EU funding (CEF)



# Commission adopts first list of renewable energy cross-border projects



- ELWIND is officially adopted to the C-B RES list
- Preparing grant application to apply CEF funding for ELWIND studies
- Validating the studies list and expected cost.

# Cross-border hybrid project concept in Baltic Sea



- Sõrve, Estonia
- Kurzeme, Latvia
- 2026
- Operational by 2030
- 40 -100
- 700 - 1000 MW
- 1.1 million





ESTONIA

LATVIA

- Planned onshore substation
- Planned offshore substation

🌊 Estonian ELWIND wind park location

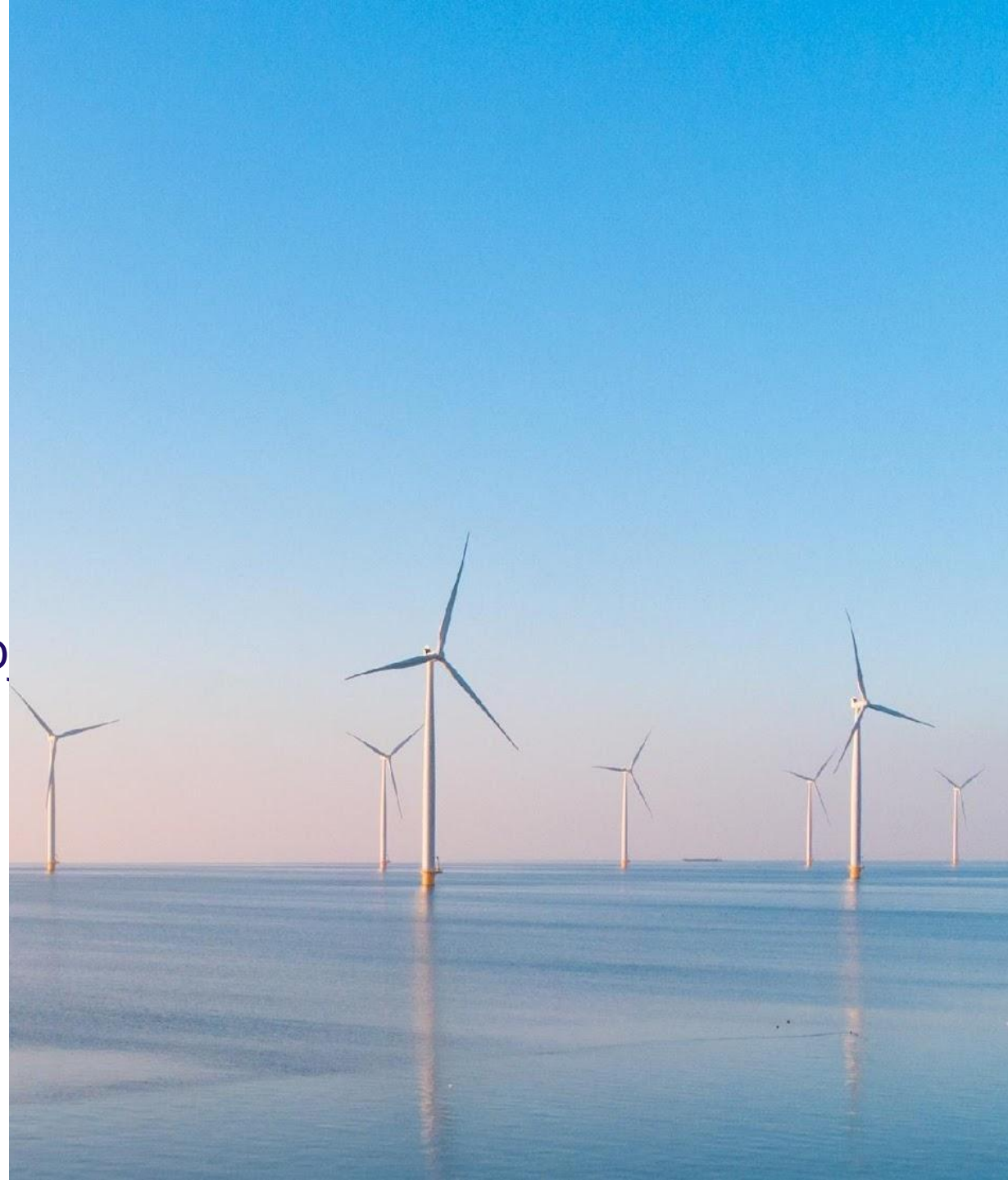
🌊 Latvian ELWIND wind park location



▭▭▭ Indicative hybrid interconnector alternative corridors

# Opportunities of C-B cooperation

- Strengthening practical energy field cooperation
- Moving towards several goals
- Collaboration leads to building up similar process in large-scale C-B pro planning and permitting
- Possibilities to include EU funding



# Main challenges of developing a C-B pro

- Planning procedures
- Synchronizing activities
- OS legislative framework under amer
- Finding most cost-efficient alternative connect OWPs.
- Maintaining attractiveness of the proj towards investors





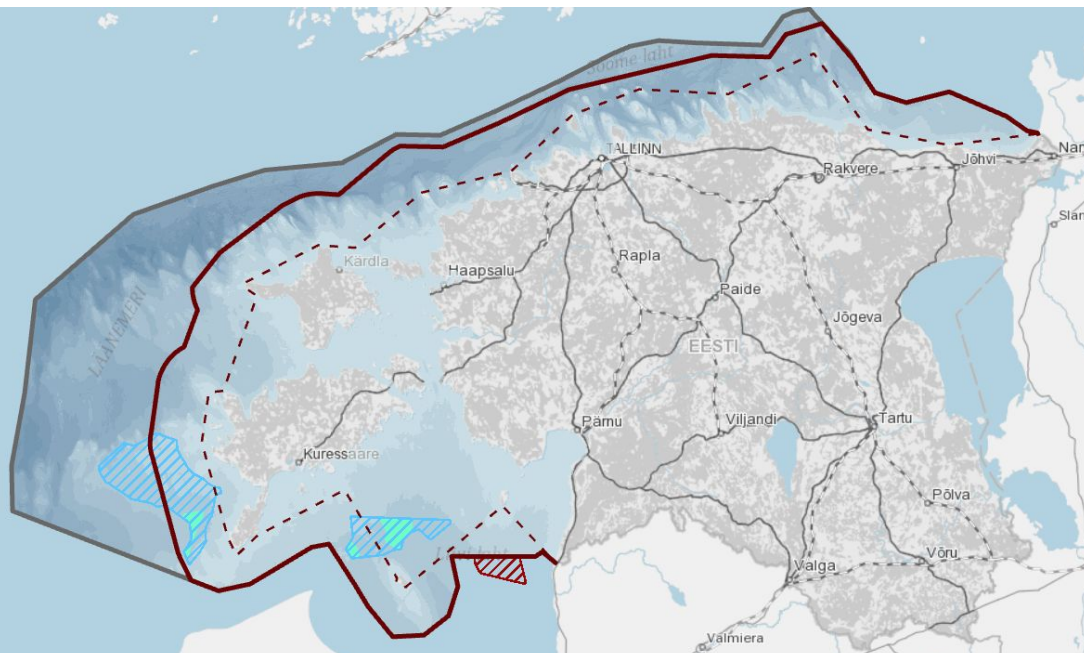
# Next steps

- Submitting superficies / Offshore license applications
- interaction with local communities and stakeholders
- Environmental Impact assessment
- C-B RES grant application
- Designing auctioning principles (including prequalification criteria)



# Offshore wind development in Estonia

Enterprises are welcome to submit superficies license applications for wind energy development areas.

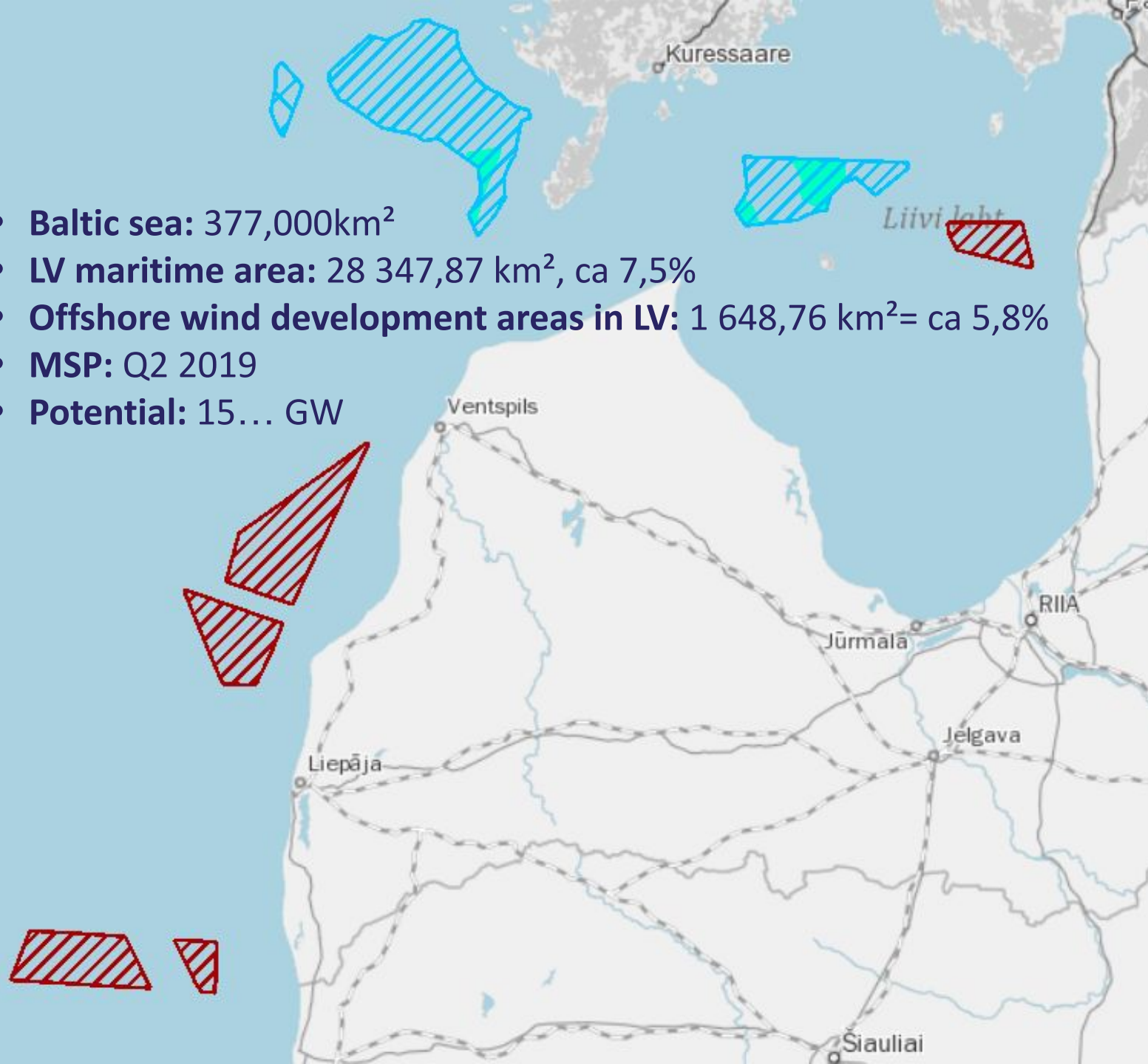
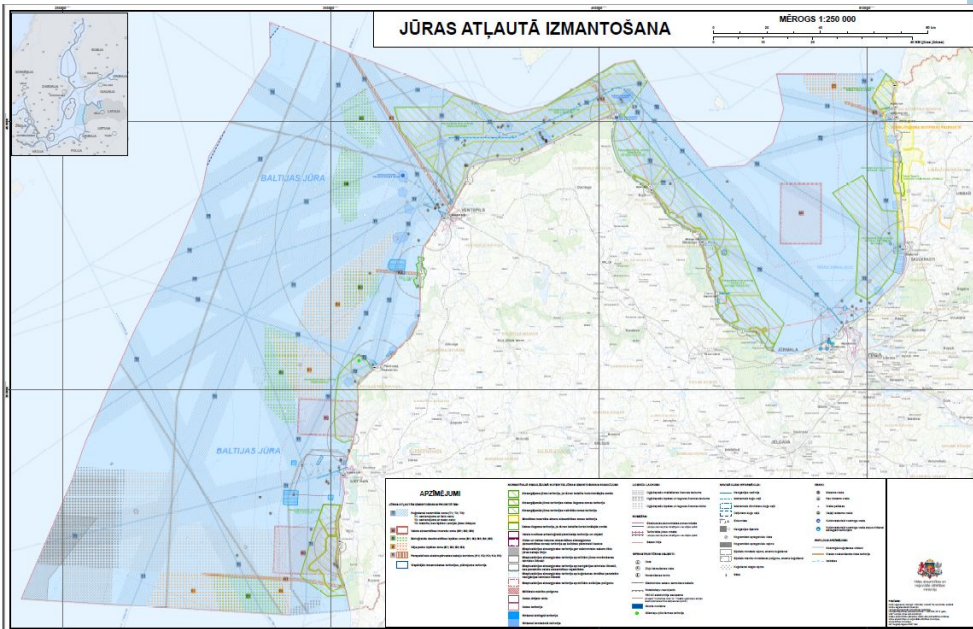


- Baltic sea: 377,000km<sup>2</sup>
- EE maritime area: 36 000 km<sup>2</sup>, ca 9 %
- New offshore wind development areas in EE:
- 1 700 km<sup>2</sup>= ca 5%
- MSP: Q1 2022
- Potential: 7... GW

# Offshore wind development in Latvia

The region has opened up for Offshore investments.


- Baltic sea: 377,000km<sup>2</sup>
- LV maritime area: 28 347,87 km<sup>2</sup>, ca 7,5%
- Offshore wind development areas in LV: 1 648,76 km<sup>2</sup>= ca 5,8%
- MSP: Q2 2019
- Potential: 15... GW



*Thank you!*

*Website: <https://elwindoffshore.eu/>*

*For further questions, please contact:*

Tõnn Tuvikene  
Tonn.Tuvikene@kik.ee  
+372 525 9141 

Uldis Garančs  
Uldis.Garancs@liaa.gov.lv  
+371 6703 9469 