

How to build a good quality project?

(CORE AND SMALL PROJECTS)



Interreg Baltic Sea Region 2021-2027

Online | 12 January 2022





Agenda

- Welcome and introduction
- Programme priorities and types of projects
- How to start developing your project?
- What is a good partnership?
- Break
- What is a good work plan?
- How to measure your success?
- Break
- How to apply?
- What's next?





Programme priorities and types of projects

Agnieszka Lipińska and Marina Kislyak,
Project Officers

Interreg Baltic Sea Region 2021-2027 | 12 January 2022



Content

- Programme priorities
- Programme priorities and objectives for **core** and **small** projects
- Main features of **core** projects
- Main features of **small** projects

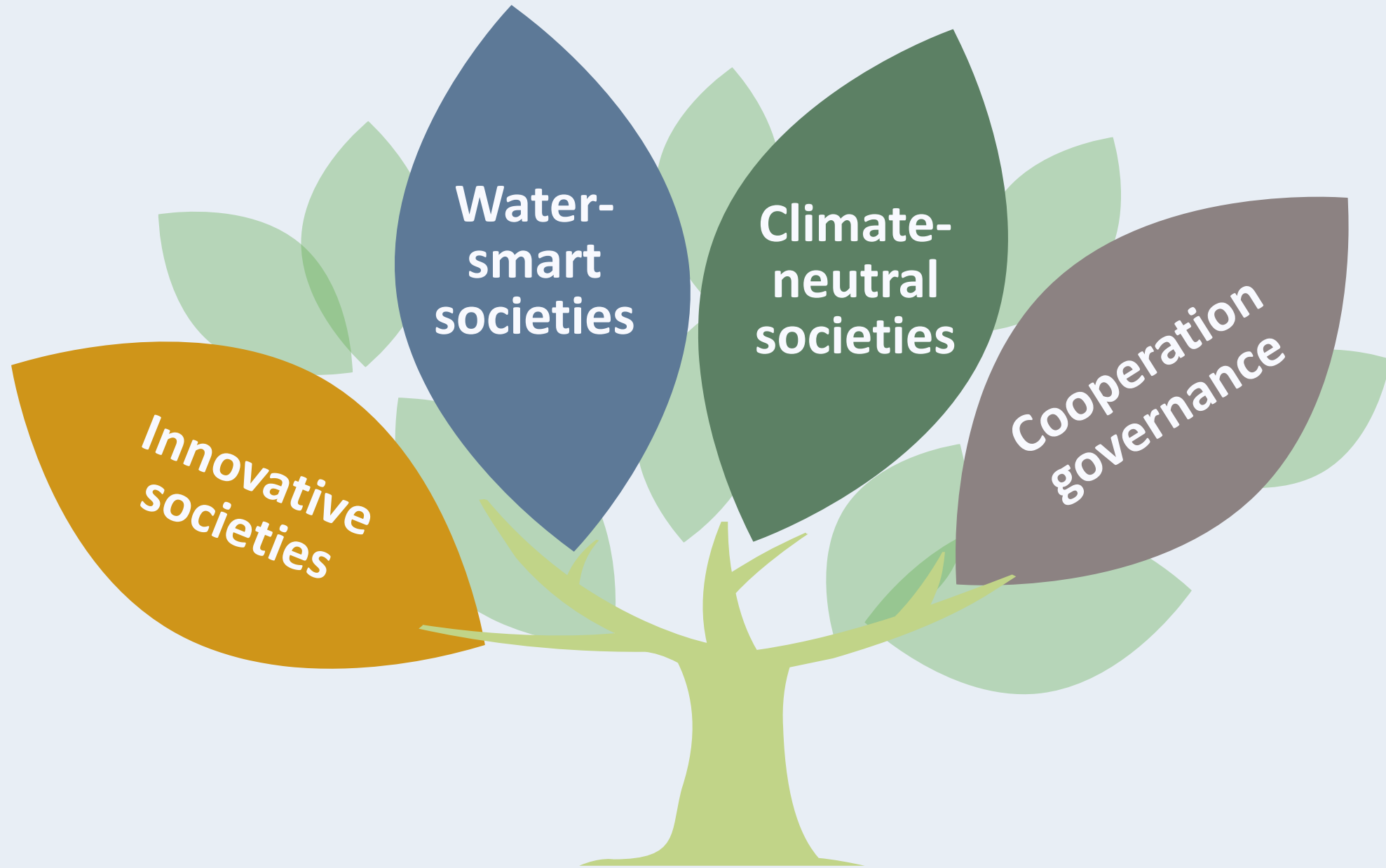


What are our priorities

Interreg
Baltic Sea Region



Co-funded by
the European Union



Priorities for core and **small** projects

Interreg
Baltic Sea Region



Co-funded by
the European Union



Innovative societies

PRIORITY 1

Programme objective: 1.1
Resilient economies and communities

Programme objective: 1.2
Responsive public services



Water-smart societies

PRIORITY 2

Programme objective: 2.1
Sustainable waters

Programme objective: 2.2
Blue economy



Climate-neutral societies

PRIORITY 3

Programme objective: 3.1
Circular economy

Programme objective: 3.2
Energy transition

Programme objective: 3.3
Smart green mobility

Main features of core projects

Interreg
Baltic Sea Region



Co-funded by
the European Union



Focus

Practical and durable **solutions** to defined challenges | tested through **pilots** | **transferred** to the target groups



Project partners

Public authorities particularly encouraged to participate as partners



Implementation phase

Up to **36 months**



Budget

No limitation
(proportionate to activities, outputs, partnership, etc.)

More information: interreg-baltic.eu/gateway/programme-manual



Main features of **small** projects

Interreg
Baltic Sea Region



Co-funded by
the European Union



Focus

Easier access

Building **trust** | keeping **networks** | staying closer to **citizens** | responding to **unpredictable** challenges



Project partners

Public authorities, NGOs and newcomers particularly encouraged to participate as partners



Implementation phase

Up to 24 months



Budget

Up to EUR 500,000

More information: interreg-baltic.eu/gateway/programme-manual





How to start developing your project?

What is a good partnership?

What is a good work plan?

How to measure your success?

How to apply?



Relevance: how to start developing your project?

Charis-Ariadni Loupasi and Marina Kislyak,
Project Officers

Interreg Baltic Sea Region 2021-2027 | 12 January 2022



Content

- Challenge
- Translationality
- Target groups
- Objective
- Specific aims of **small** projects
- Contribution to the EUSBSR
- Use of results and planned cooperation
- Complementarity with CBC programmes



IDEA



next big step

- Is the idea relevant for the Programme and its focus?
- Is it in line with any of the Programme's objectives?
- Does it cover certain requirements (e.g. work packages, pilot activities, solutions, etc.)?



Start with the CHALLENGE

1. **Analyse the situation:** Define the challenge your project aims to tackle. What is the situation in the Baltic Sea region?
2. **Improvement:** How will you try to improve this situation with your project? What are the gaps the project will fill?
3. **Opportunities:** Identify the opportunities that derive from the gaps. What is the added value in cooperating transnationally to address this challenge?

Be realistic and focused!



Think TRANSNATIONAL

- Why do you need to cooperate transnationally to address this challenge?
- Why have you selected the countries covered in the partnership?

Your challenge should require transnational cooperation to be addressed!

Justify why the project is relevant for the Baltic Sea region!



Don't forget your TARGET GROUPS

Organisations that are affected by the challenge and have the competences or mandate to influence it.

- **Define** up to **five relevant target groups**
- **Identify** and **formulate** their **needs**
- **Be** specific and realistic

AIM

- **Support** the target groups
- **Enable them** to **address** the **challenge**
- Bring positive **change**
- **Increase** their capacity

Be aware of your target groups' needs at the stage of application!



The OBJECTIVE of your project

Closely linked to the **target groups**



How does your project help the selected target groups **meet their needs** and **address the specific challenge** in the BSR?

The OBJECTIVE should:

- Be in line with the needs of the target groups
- Contribute to tackling the identified challenge



Relevance:

Specific aims

- **Building trust** that could lead to further **cooperation initiatives**
- Initiating and keeping **networks** that are important for the BSR
- Bringing the Programme **closer to the citizens**
- Allowing a **swift response** to unpredictable and urgent challenges

Small
projects



Contribution to the EUSBSR

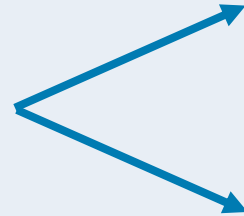
- Indication whether your project contributes to the implementation of the **Action Plan** of the EU Strategy for the Baltic Sea Region (EUSBSR)
- Selection of the **Policy Area** of the EUSBSR your project contributes to most
- List the **action** of this Policy Area that your project contributes to and explain how

More information: <https://www.balticsea-region-strategy.eu/about/implementation>



Use of RESULTS and planned COOPERATION

List of **projects**
co-financed from any
funding source



the outcomes of which you used to develop your project proposal, and/or

you plan to cooperate with, if your project receives funding



Relevance:

Complementarity with CBC Programmes

- Additionally, please check if:
 - ✓ partners you plan to involve also fit geographically in a CBC programme(s)
 - ✓ your project idea also fits geographically and thematically in a CBC programme(s)
- If “yes”, please justify why you are applying for Interreg BSR, and not for a CBC Programme

Small
projects





How to start developing your project?



What is a good partnership?



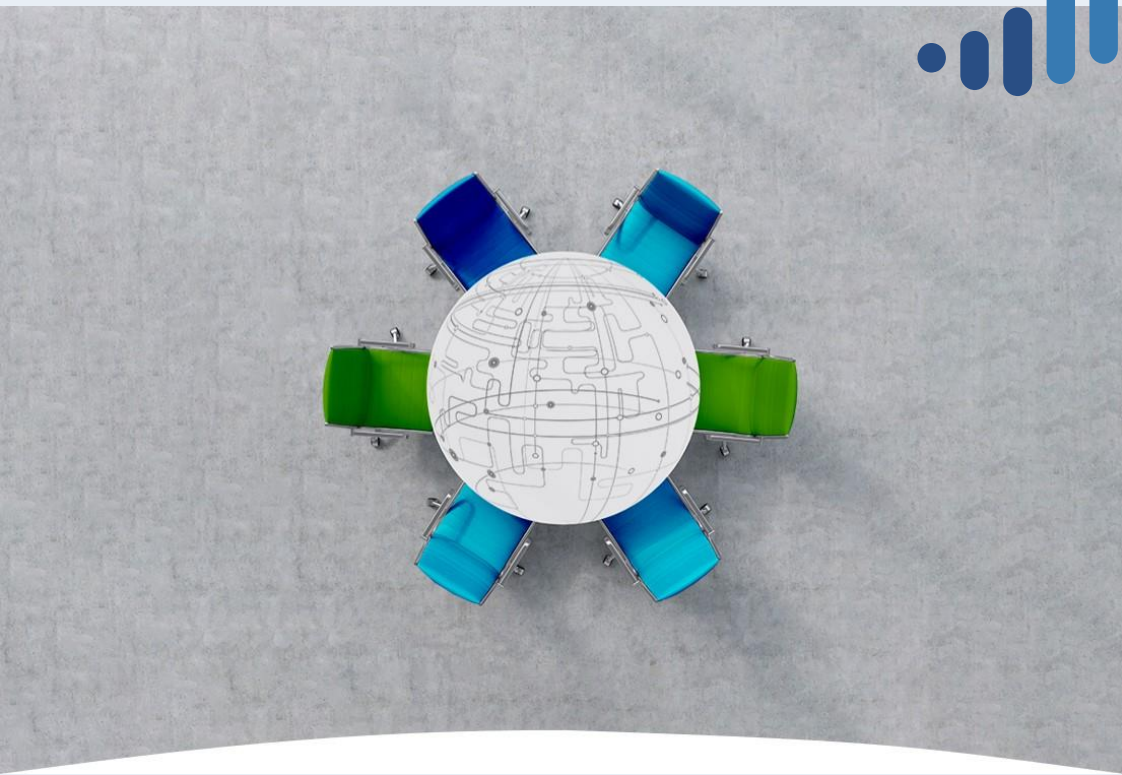
What is a good work plan?



How to measure your success?



How to apply?



Partnership: whom to take on board?

Sebastian Hentsch and Marina Kislyak,
Project Officers

Interreg Baltic Sea Region 2021-2027 | 12 January 2022



Content

- General rules
- Geography & funding
- Partnership composition
- Specifics about **small** projects
- Russian partners





Project
Partner

Lead
Partner

Associated
Organisation



ground rule:

3 from 3



Geography

Interreg
Baltic Sea Region



Co-funded by
the European Union

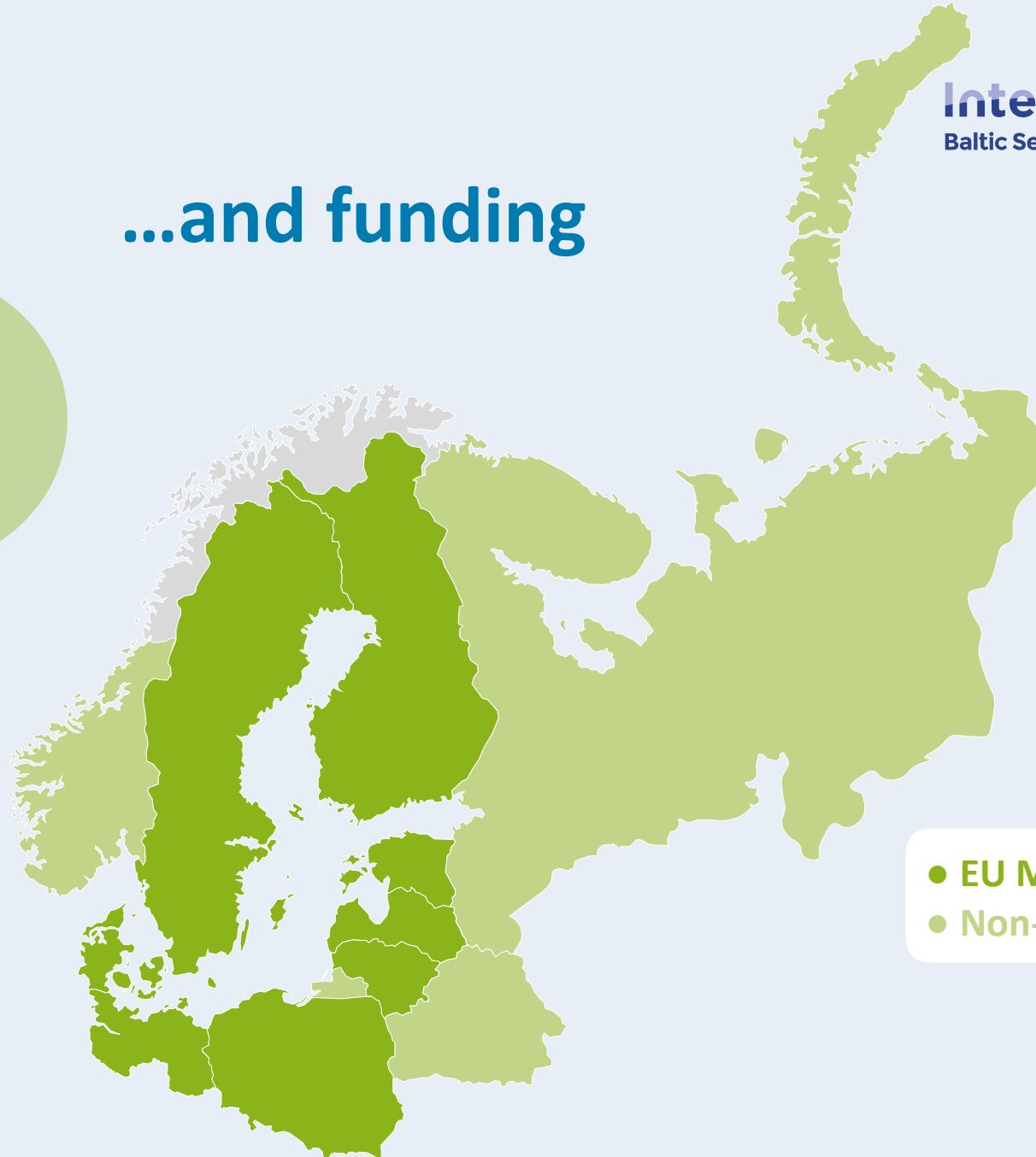
...and funding

50 % co-
financing
for NO

80 % Co-
Financing
for EU
countries

Co-
Financing
RU tbc.

- EU Member States
- Non-EU States



Whom to take on board

- **Target-group** orientation & access
- **Competence** & capacity for implementation
- **Clear roles** & involvement
- **Focus** on public authorities, **potential** of other actors



Potential partners & actors

Interreg
Baltic Sea Region



Co-funded by
the European Union

Sectoral agency

Business support organisations

International governmental organisation

Universities

EGTC

Public authorities

SMEs

Interest groups

Research institutions

Local, regional & national institutions

Large enterprises

NGO

Pan-Baltic organisations

Education / training centres



One important point

Interreg
Baltic Sea Region



Co-funded by
the European Union

Focus
Competence
Logic

more
important
than

Quantity



Partnership:

Partnership composition

- The smaller scope of projects ➡ smaller partnerships
- Mainly local, regional, national **authorities and NGOs**
- **Newcomers** are encouraged to apply as partners

Small
projects



Partnership: core and **small** projects

Interreg
Baltic Sea Region



Co-funded by
the European Union

Participation of Russian organisations in the first calls

Project partners on hold

Application

Project partners

Contracting and Implementation

Guidance for the participation of Russian organisations:

https://interreg-baltic.eu/wp-content/uploads/2021/12/Guidance_Participation-of-Russian-organisations-in-the-first-calls.pdf





How to start developing your project?



What is a good partnership?



What is a good work plan?



How to measure your success?



How to apply?



Work plan: well-planned activities a key to success?

Agnieszka Lipińska and Marina Kislyak,
Project Officers

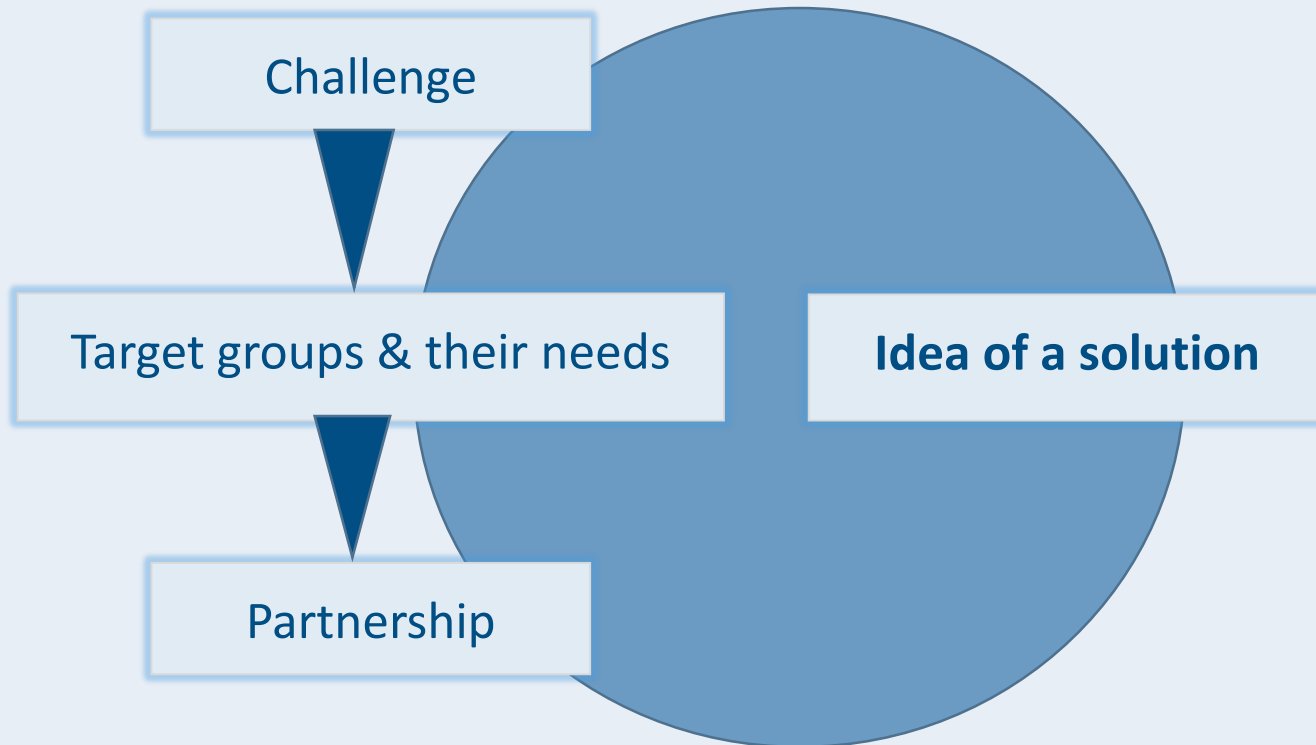
Interreg Baltic Sea Region 2021-2027 | 12 January 2022

Content

- Work plan: **core** projects
 - Idea of a solution
 - Three predefined work packages
 - Deliverable, output, solution, pilot
 - Durability
 - Work plan: example
- Work plan: **small** projects



Idea of a solution



- know **state of the art** in the area of your project
- identify the **needed solution**
- decide how the **solution can look like** (think of all the necessary components)
- decide whether to develop a **new solution** from scratch or to **modify and upscale** the already existing solution



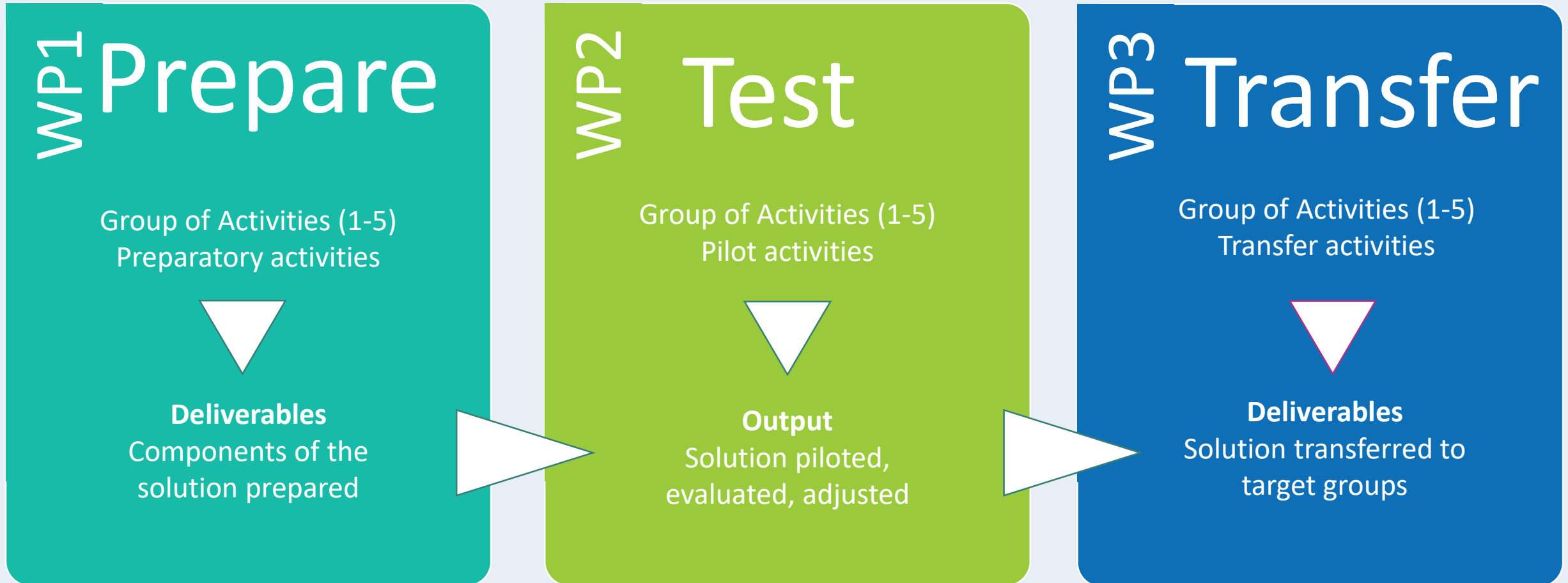
Work plan

Interreg
Baltic Sea Region



Co-funded by
the European Union

Three predefined work packages



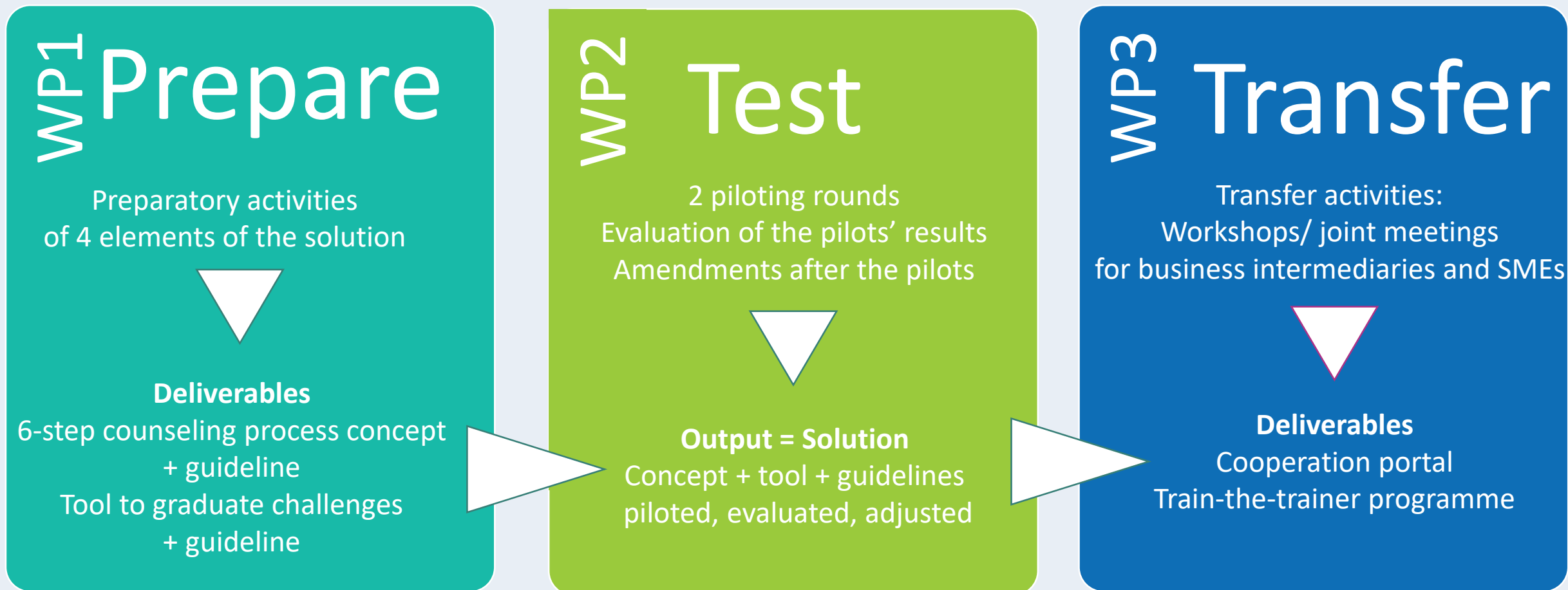
Work plan: example

Interreg
Baltic Sea Region



Co-funded by
the European Union

Lack of innovative tools and methods for business counseling for SMEs

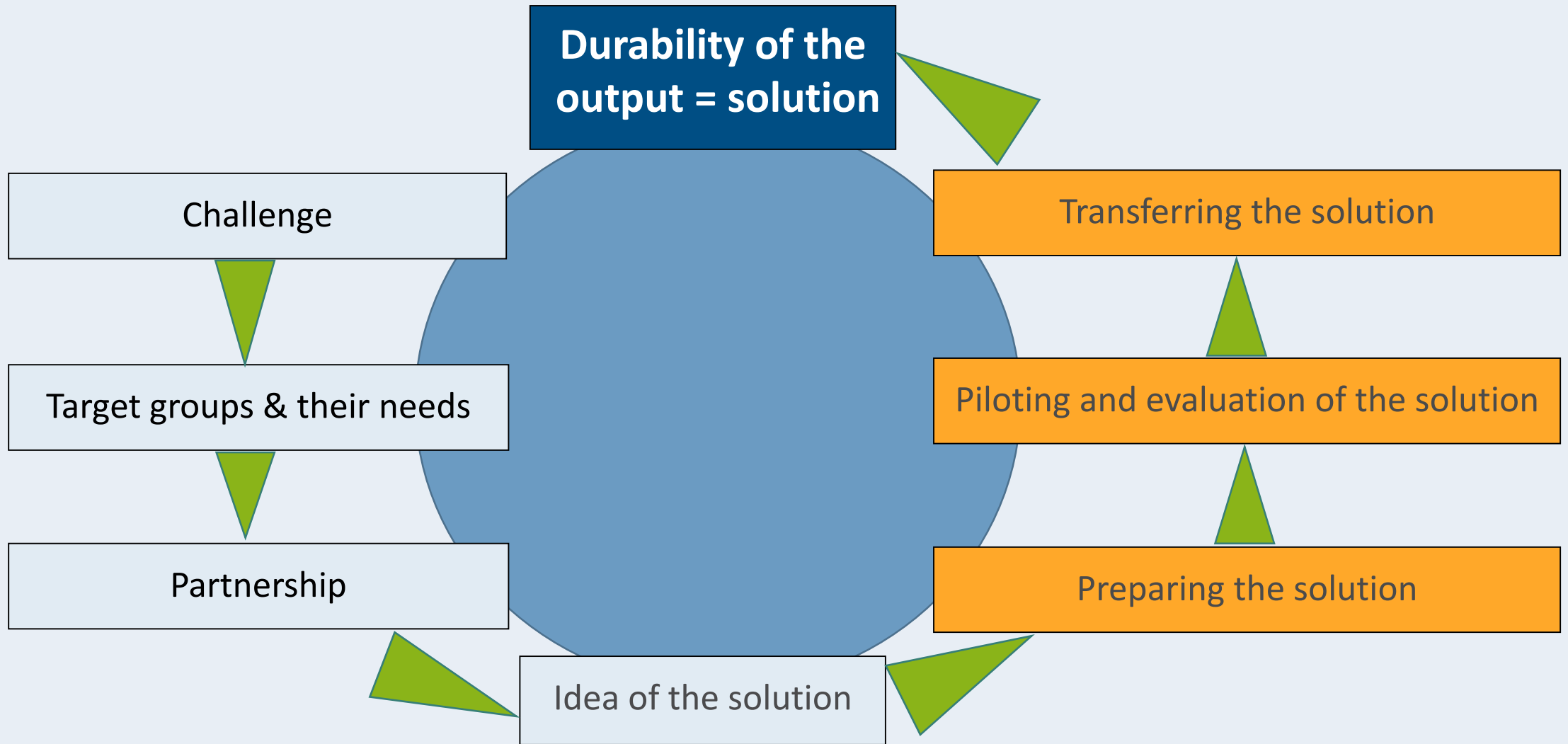


Deliverable, output, solution, pilot

- **Deliverable** = intermediary step to reach a particular output
- **Output** = solution prepared, piloted, evaluated and adjusted
- **Solution** contributes to solving the challenge
- **Pilot** validates the usefulness of the solution



Durability



Work plan

1 WP

1-5 Group of Activities



Deliverables

+

At least one output
Optionally, solution



✓ Pilots are not compulsory

✓ Activities need to go beyond pure networking
and knowledge exchange

Small
projects





How to start developing your project?



What is a good partnership?



What is a good work plan?



How to measure your success?



How to apply?



Indicators: how to measure the success?

Laura Ligazzolo and Marina Kislyak, Project Officers

Interreg Baltic Sea Region 2021-2027 | 12 January 2022

Indicators

OUTPUT INDICATORS	RESULT INDICATORS
RCO 84 Pilot actions developed jointly and implemented in projects	RCR 104 Solutions taken up or up-scaled by organisations
RCO 116 Jointly developed solutions	
RCO 87 Organisations cooperating across borders	PSR 1 Organisations with increased institutional capacity due to their participation in cooperation activities across borders





OUTPUT INDICATORS	RESULT INDICATORS
RCO 84 Pilot actions developed jointly and implemented in projects	RCR 104 Solutions taken up or up-scaled by organisations
RCO 116 Jointly developed solutions	
Obligatory for small projects	
RCO 87 Organisations cooperating across borders	PSR 1 Organisations with increased institutional capacity due to their participation in cooperation activities across borders





How to start developing your project?



What is a good partnership?



What is a good work plan?



How to measure your success?



How to apply?



How to apply?

Agnieszka Lipińska and Marina Kislyak,
Project Officers

Interreg Baltic Sea Region 2021-2027 | 12 January 2022

Content



Core
projects



Small
projects

- Project idea form (PIF)
- Request for access to BAMOS+
- Submission of the application and other documents
- Indicative timeline



Application procedure

Project idea form (PIF)

- Compulsory step
- Basis for consultations
- Templates available at <https://interreg-baltic.eu/gateway/consultations/>
- Should be sent to: idea@interreg-baltic.eu
- PIFs are submitted not later than:
 - ✓ **9 March 2022** – small projects
 - ✓ **15 March 2022** – core projects



Application procedure

Request for access to BAMOS+

- Template available at <https://interreg-baltic.eu/gateway/bamos-account/>
- Lead applicant applies for log in to BAMOS+ via E-mail: account@bamos.eu
- Requests for access to BAMOS+ are submitted not later than:
 - ✓ **16 March 2022** – small projects
 - ✓ **12 April 2022** – core projects
- Access to BAMOS+ is granted after **8 February 2022**



Submission of the application and other documents

- All documents are submitted in the digital format in BAMOS+ only
 - ✓ **application form**
 - ✓ **partner declarations**
 - ✓ **contact information**
 - ✓ **bank information**

- Must be submitted not later than:
 - ✓ **30 March 2022 – small projects**
 - ✓ **26 April 2022 – core projects**



Indicative timeline

	Small projects	Core projects
PIFs submission	by 9 March 2022	by 15 March 2022
Consultations based on PIFs and request for access to BAMOS+	by 16 March 2022	by 12 April 2022
Launching of the call	8 Feb 2022	8 Feb 2022
Closure of the call/ submission of the application and other documents	30 March 2022 16:00 CEST	26 April 2022 16:00 CEST
Selection of the applications by the Monitoring Committee	June 2022	Sept 2022



Application procedure

Disclaimer

Please note that the Interreg Baltic Sea Region Programme Document is subject to adoption by the European Commission. During this process the Programme content might be revised. Timeline of the calls is dependent on the duration of the adoption process.

All documents related to this call for applications are also subject to approval by the Monitoring Committee of the Programme. The Monitoring Committee will be constituted after adoption of the Programme by the European Commission. The Monitoring Committee might potentially change conditions of the call.

When submitting the applications, the applicants shall accept the above risks. The programme and the participating Member States cannot be held responsible or liable in any way for any claims, damages, losses, expenses, or costs.





Viktoria Nilsson, Communication Officer

Interreg Baltic Sea Region 2021-2027 | 12 January 2022



Calls for applications



Consultations



Electronic data exchange system



Programme Manual



Webinars



Programme objectives



Tutorials



Info material



Matchmaking platform

Gateway for applicants



INTERREG BALTIC SEA REGION Programme Manual

for the period 2021 – 2027

Version 1.0
11.11.2021

Programme Manual

interreg-baltic.eu/gateway/programme-manual

- Defines **principles, rules, regulations**
- Check **quality assessment criteria** upon submission
- Available for download



Video Tutorials

interreg-baltic.eu/gateway/tutorials

- Programme objectives
- **core** and **small projects**, including financial elements on how to construct budgets and simplified cost options
- **how to apply** (When & How)



More tutorials are in the pipeline!

- **how to apply** (BAMOS+)
- **matchmaking platform**



Interreg Webinars Baltic Sea Region

Meet to learn
how to get EU funding
for your smart idea.

Check them out here:
interreg-baltic.eu/gateway/#webinars

Webinars



Webinars

Interreg
Baltic Sea Region



Co-funded by
the European Union

- | | |
|--------------------|--|
| 13 January | Financial webinar for core projects and small projects applicants: budget planning and eligibility of costs |
| 18 January | New funding to build innovative societies |
| 25 January | New funding to build water-smart societies |
| 1 February | New funding to build climate-neutral societies |
| 8 February | How to build good core & small projects |
| 9 February | Financial webinar for core projects and small projects applicants: budget planning and eligibility of costs |
| 11 February | Webinar for Russian organisations |



Matchmaking platform

Why worth it?

- **Secure environment & strong community**
- **Advanced search functions for partners**
 - Via country, NUT2 region
 - Type of organisation
 - Interest; expertise; experience
 - And more!
- **Project idea groups** for discussing and developing the ideas





Stay tuned

[Interreg-baltic.eu/subscribe-newsletter](https://interreg-baltic.eu/subscribe-newsletter)

- Sign up for the **newsletter**
- Be our frequent guest at the **gateway**
- Visit **our social media** channels

interreg-baltic.eu

matchmaking.interreg-baltic.eu

interreg-baltic.eu/**subscribe-newsletter/**

facebook.com/InterregBSR

twitter.com/InterregBSR

linkedin.com/in/interregbsr

instagram.com/interreg.bsr

youtube.com/user/BSRprogramme

The Programme is managed by **Investitionsbank Schleswig-Holstein (IB.SH)** in Kiel, Germany.

Investitionsbank Schleswig-Holstein

Interreg Baltic Sea Region

Managing Authority/Joint Secretariat

Grubenstraße 20, 18055 Rostock, Germany

Tel: +49 381 454 84 5281

E-mail: info@interreg-baltic.eu





Thank you and goodbye!

