



Programme Factsheet  
Interreg Baltic Sea Region  
2014-2020



EUROPEAN  
REGIONAL  
DEVELOPMENT  
FUND

[interreg-baltic.eu](https://interreg-baltic.eu)

[projects.interreg-baltic.eu](https://projects.interreg-baltic.eu) | [Twitter](#) @InterregBSR

[Facebook](#) @InterregBSR | [LinkedIn](#) @interregbsr | [Instagram](#) @interreg.bsr

Programme Factsheet. Last update: December 2022

The main aim of the Interreg Baltic Sea Region 2014-2020 Programme was to **increase institutional capacities** of authorities, NGOs, companies and other organisations to make the region **more innovative, better accessible and sustainable**.

**140** cooperation  
projects

**EUR 280.7 million**  
for solutions to common challenges



**Sources of funding**

European Regional Development Fund

Norwegian national funding

European Neighbourhood Instrument  
& Russian national funding

# Projects

**310** learning experiences

Projects generated **knowledge and competence** for their target groups, increased capacity to work in a **transnational environment**, made use of **human and technical resources** more efficient as well as improved **governance** structures and organisational set-up.



EUROPEAN  
REGIONAL  
DEVELOPMENT  
FUND

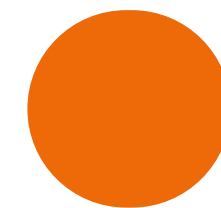
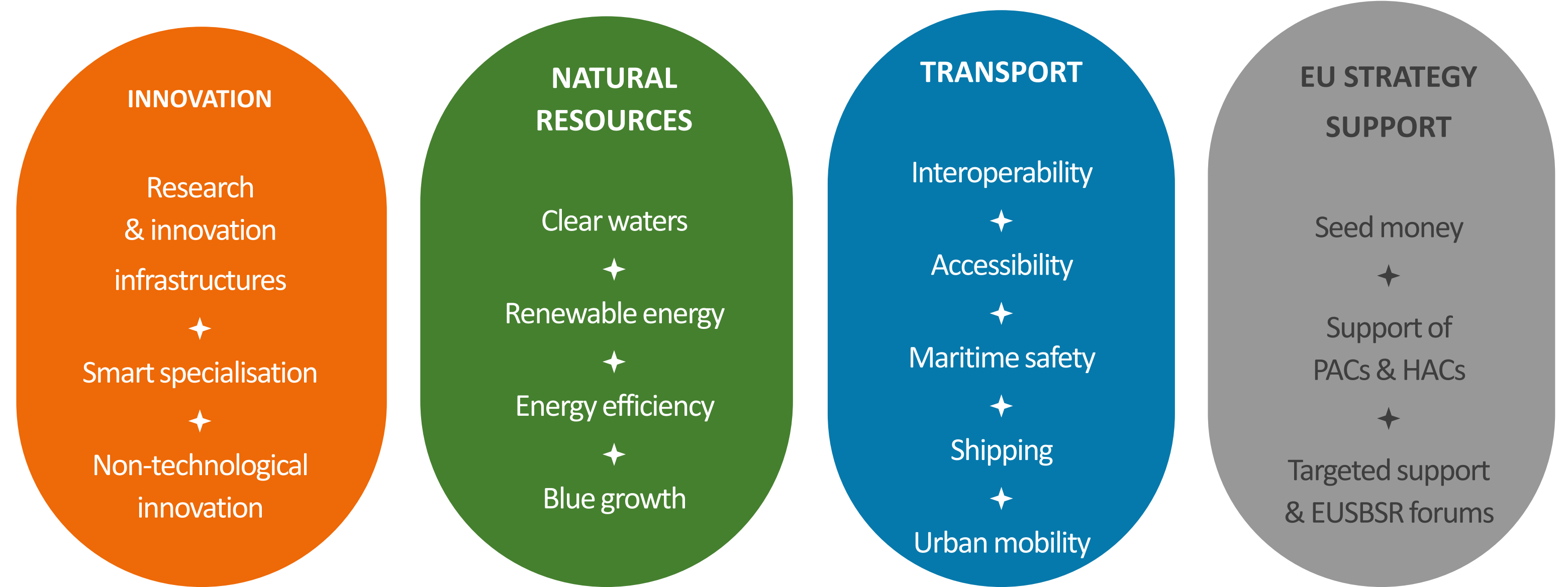
[interreg-baltic.eu](https://interreg-baltic.eu)

[projects.interreg-baltic.eu](https://projects.interreg-baltic.eu) | [Twitter](#) @InterregBSR

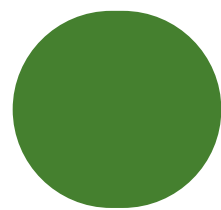
[Facebook](#) @InterregBSR | [LinkedIn](#) @interregbsr | [Instagram](#) @interreg.bsr

Programme Factsheet. Last update: December 2022

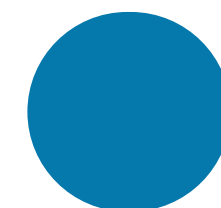
## Prorities, objectives and project examples



[BaltSe@nioR](#) and [BaltSe@nioR 2.0](#) helped furniture manufacturers in Estonia, Denmark, Finland, Germany, Latvia, Lithuania, Norway, Poland and Sweden create tailor-made products for seniors and inspired them by showcasing prototypes of smart furniture.



[IWAMA](#) partners installed state-of-the-art wastewater plants in Estonia, Germany, Latvia, Lithuania and Poland. Best practices, technical solutions and tools on water and wastewater management collected in the [Baltic Smart Water Hub](#) are in active use today, whereas training packages ensure life-long learning for water management specialists in the region.



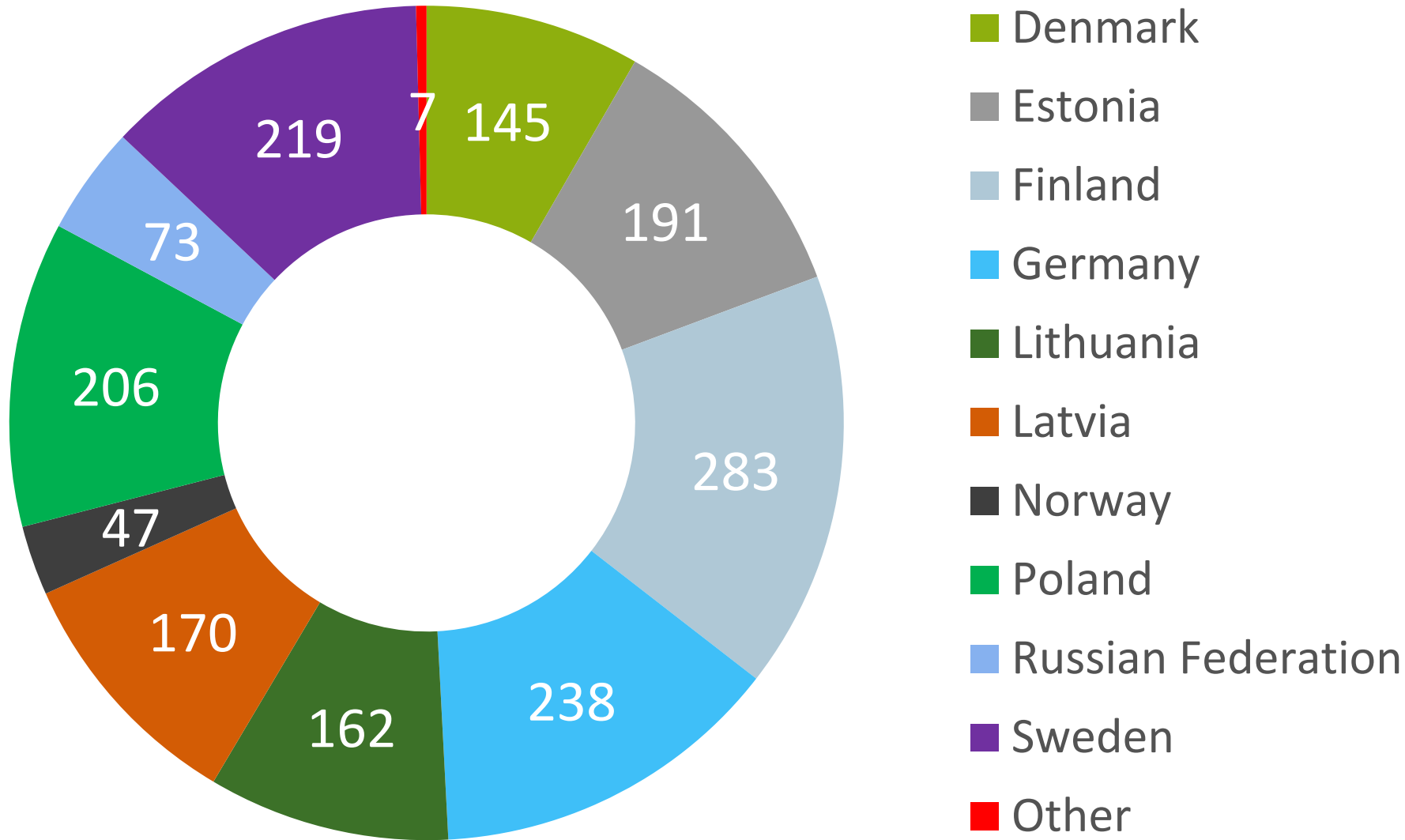
Emergency services in countries around the Baltic Sea aligned their procedures and trained together to respond in a coordinated manner in cases of passenger ship accidents ([DiveSMART Baltic](#)), in accidents with harmful chemicals in ports ([HAZARD](#)) or at sea ([ChemSAR](#)). The [ResQU2](#) platform ensured that the gained learning experiences and the guidelines reached the national levels.

# Partners

Over 1.740  
partners in  
13 countries



## Partners per country



## Types of Partners



616 Local | regional | national authorities

563 Educational and research organisations

336 Enterprises and business support organisations

226 Non-governmental and international organisations



Interreg Baltic Sea Region

# Contribution to the EUSBSR

EUR 167 million  
from **ERDF**  
invested in the Strategy  
implementation



[interreg-baltic.eu](https://interreg-baltic.eu)

[projects.interreg-baltic.eu](https://projects.interreg-baltic.eu) | [Twitter](#) @InterregBSR

[Facebook](#) @InterregBSR | [LinkedIn](#) @interregbsr | [Instagram](#) @interreg.bsr

Programme Factsheet. Last update: December 2022

**77** flagship projects and  
their extension projects  
**EUR 146 million of ERDF**

**9** project platforms  
**EUR 6.8 million of ERDF**

**62** seed money projects  
**EUR 2.6 million**

**Targeted EUSBSR support**  
**EUR 11.9 million**



**EUSBSR**  
EU STRATEGY  
FOR THE BALTIC  
SEA REGION

SAVE THE SEA



**INCREASE  
PROSPERITY**

**CONNECT  
THE REGION**

More information at: [interreg-baltic.eu/eusbsr](https://interreg-baltic.eu/eusbsr)